

The information given in this document
is not to be communicated, either
directly or indirectly, to the press or to
any person not authorized to receive it.

**USER HANDBOOK
FOR**

**CLANSMAN
RADIO INSTALLATIONS
IN
ARMoured PERSONNEL CARRIER
FV 432**

**PART 2
CLANSMAN BASIC
AND COMMAND HARNESSSES**

Published under the authority of:-
**ASSISTANT CHIEF OF THE GENERAL STAFF
(OPERATIONAL REQUIREMENTS)
Ministry of Defence**

PUBLICATIONS AUTHORITY
QUALITY ASSURANCE DIRECTORATE (WEAPONS)
WOOLWICH LONDON
S.E.18 6ST.

CONTENTS

CHAPTER ONE	GENERAL DESCRIPTION	Page
101	Introduction	1
103	Basic Radio Control Harness	1
104	Clansman Command Harness	1
105	Harness Facilities	7
106	Connexion of Radio Sets to Harness	8
109	Remote Connexions	11
112	Power Supply	11
113	Harness Adaptations	11
CHAPTER TWO	JUNCTION AND CONTROL BOXES	
201	General	13
202	Interconnecting Box 2-Radio (IB-2)	13
204	Interconnecting Box 3-Radio (IB-3)	14
206	Commander's Box Fixed (CBF) and Commander's Personal Unit (CPU)	14
208	Crew Box 2-Set (CB-2)	16
CHAPTER THREE	AUDIO EQUIPMENT	
301	General	17
302	Amplifier and Loudspeaker	17
305	Crewman's Headgear	18
307	Staff Users Headgear	18
308	Respirator Microphone	18
309	Pressel Box	18
310	Handset Remote Control	20
311	Independent Foot-Operated Pressels	20
312	Vehicle Audio Outlet	20

CONTENTS continued

CHAPTER FOUR	SETTING UP AND OPERATING	Page
401	General	21
402	Connecting the Headgear	21
404	Switching On the Supply	21
405	Operating the Amplifier AF Loudspeaker (AAFL)	21
406	Operating the Control Harness (Normal Working - IB-2 or IB-3 Box Installed)	21
410	Rebroadcast and Remote Facilities (Installations Equipped with IB-2 Box)	24
413	Rebroadcast and Remote Facilities (Installations Equipped with IB-3 Box)	25
414	Communal IC (Installations Equipped with IB-2 or IB-3 Box)	25
418	Fuse Replacement Data	25

LIST OF TABLES

Table		Page
1	Harness Facilities	7
2	Fuse Replacement Data	26

LIST OF ILLUSTRATIONS

Fig No		Page
1	Block Diagram of Clansman Basic Harness	2
2	Location of Clansman Basic Harness Equipment in FV 432	3
3	Block Diagram of Clansman Command Harness	4
4	Location of Additional Equipment for Command Role	5
5	Audio Socket and Independent Foot-Operated Pressel	6
6	Set Connexions	9
7	External and Internal Batten Box Connexions	10
8	Interconnecting Box 2-Radio (IB-2)	13
9	Interconnecting Box 3-Radio (IB-3)	14
10	Commander's Box Fixed (CBF) and Commander's Personal Unit (CPU)	15
11	Crew Box 2-Set (CB-2)	16
12	Amplifier (AAFL) and Loudspeaker (LSVM)	17
13	Clansman Headset Assemblies	19
14	Handset Remote Control	20

GENERAL DESCRIPTION

INTRODUCTION

101. The Clansman Radio Control Harness in the Armoured Personnel Carrier FV 432 is an interconnected system of control and junction boxes for the selection and operation of either one of two radio sets. There are two in service versions of the harness which are used with this vehicle:

- a. Basic Clansman Radio Control Harness.
- b. Clansman Command Harness which is the basic control harness with the addition of extra Crew Boxes 2-Set (CB-2) and certain audio facilities.

102. The two versions of the harness and the facilities provided are described in this chapter. The individual harness boxes and the associated audio equipment are described in Chapters 2 and 3 respectively.

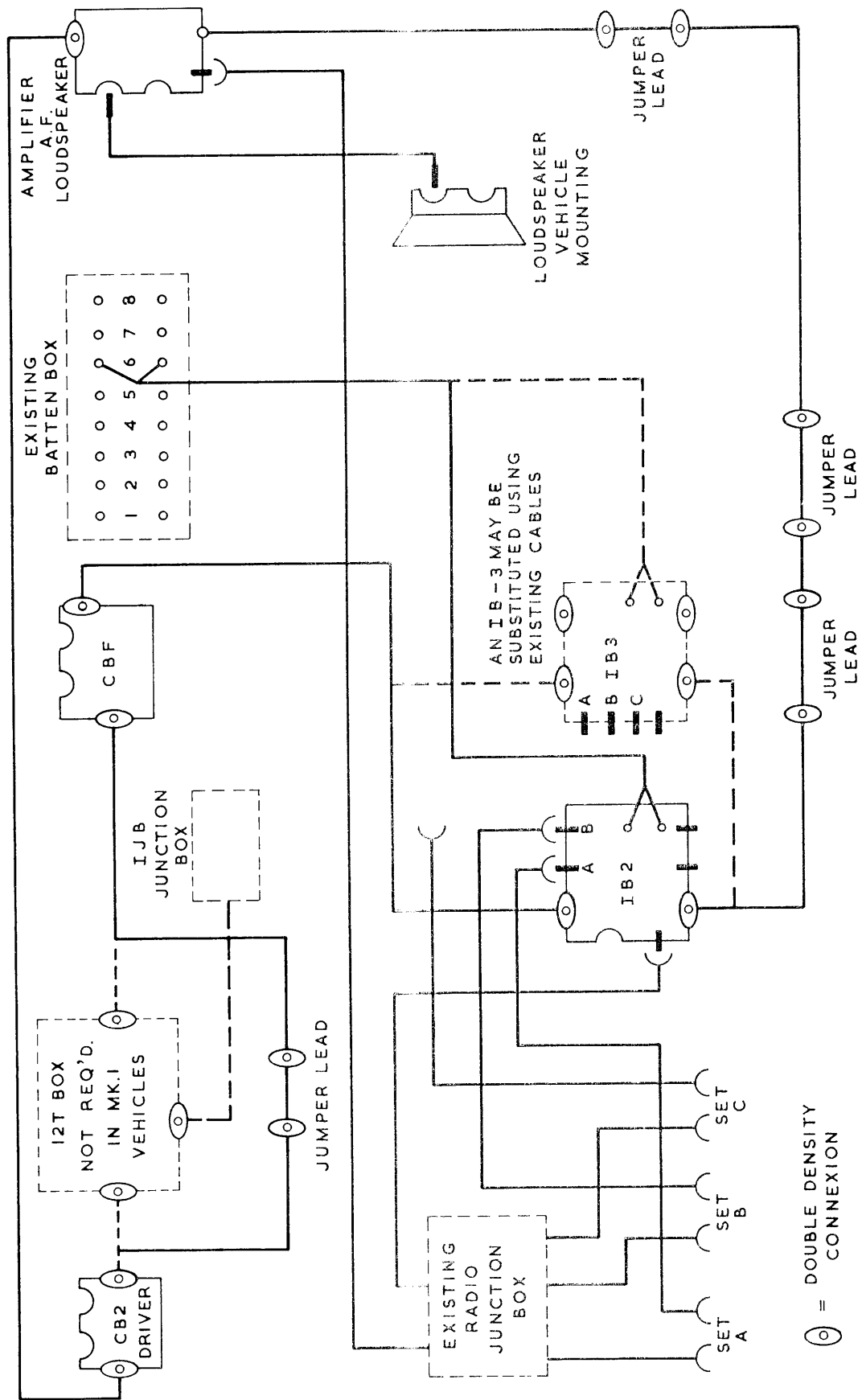
BASIC RADIO CONTROL HARNESS

103. The basic radio control harness (Fig 1) contains an Interconnecting Box 2-Radio (IB-2), or alternatively an Interconnecting Box 3-Radio (IB-3), to which are connected a Crew Box 2-Set (CB-2) for the Driver and a Commander's Box Fixed (CBF) for the Commander. An Amplifier Audio Frequency Loudspeaker (AAFL) and a Loudspeaker Vehicle Mounting (LSVM) are connected to the harness so that orders, etc., can be heard by occupants of the vehicle who are not equipped with headgear. The various units are shown in position in Fig 2.

CLANSMAN COMMAND HARNESS

104. The Clansman Command Harness (Fig 3) is the basic harness with the following additional items installed:

- a. Three additional Crew Boxes 2-Set (CB-2), located as shown in Fig 4, which are connected in place of the jumper leads on the basic harness.
- b. An additional loudspeaker is mounted above the LH side of the rear door (Fig 4) and is connected to the existing AAFL.
- c. Two free-standing, foot-operated pressel switches, the connectors of which can be plugged into the spare audio socket on CB-2s.
- d. An audio outlet socket in the rear LH corner (Fig 5) for the connexion of either a foot pressel or crewman's headgear. (The socket is connected to the CB-2 above the rear door).



687/1

Fig 1 Block Diagram of Clansman Basic Harness

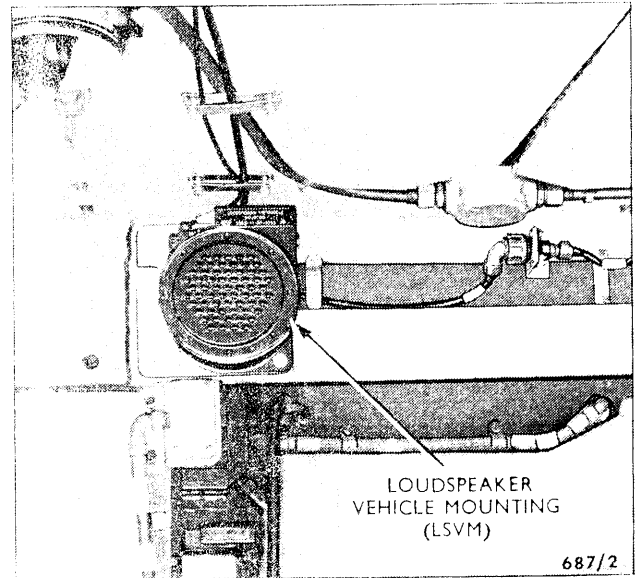
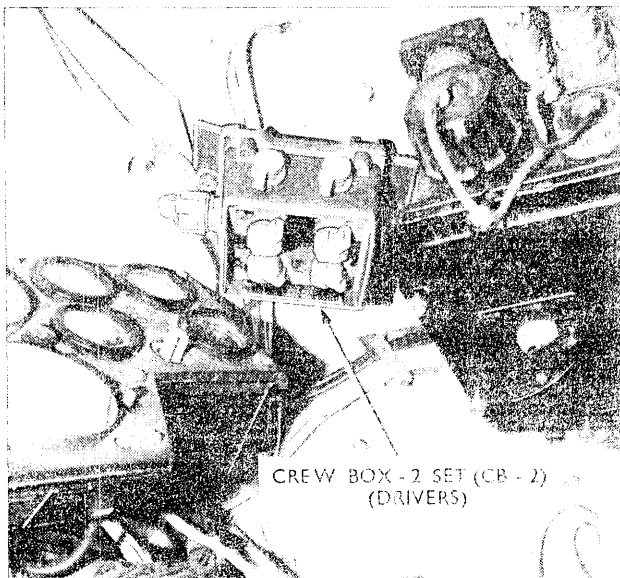
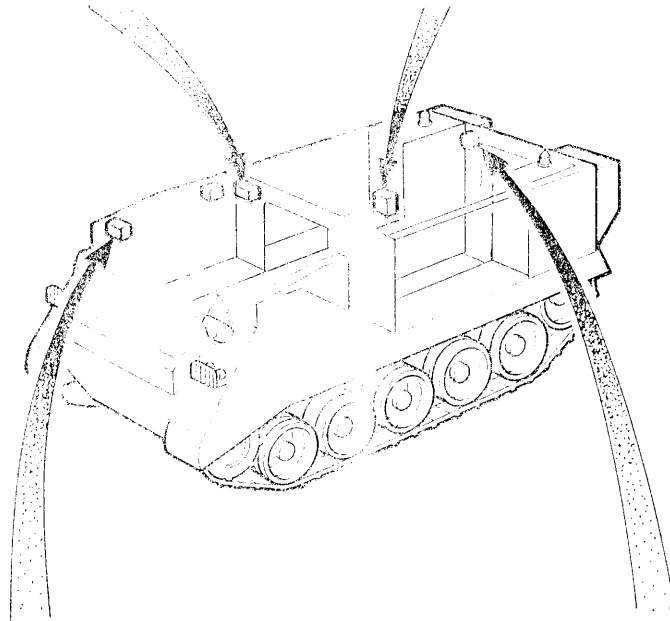
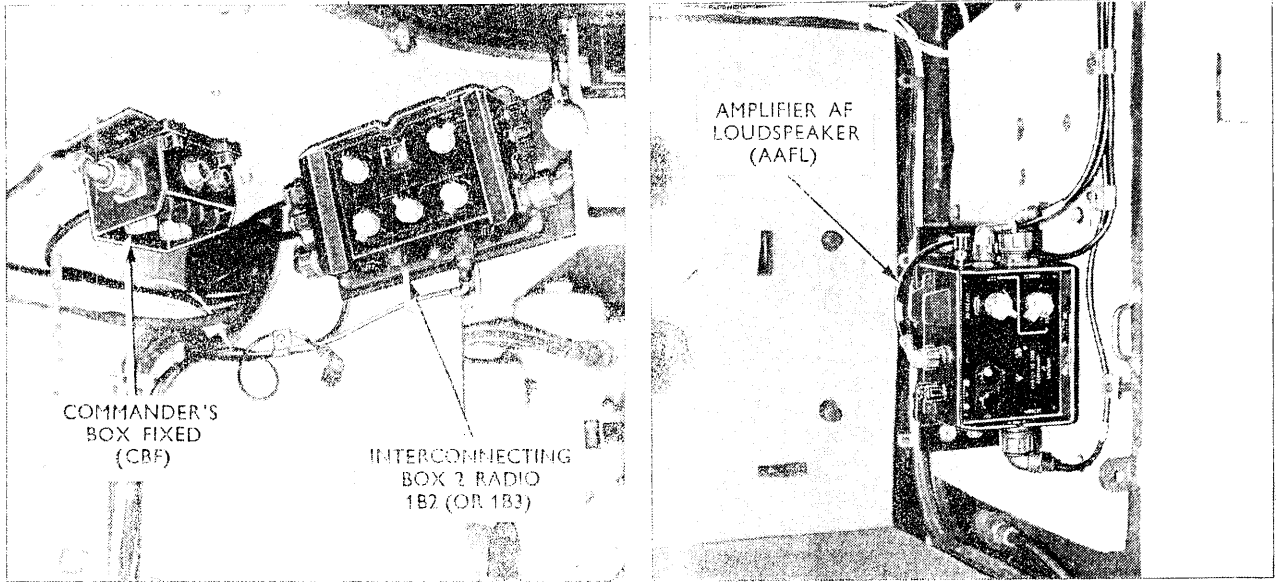


Fig 2 Location of Clansman Basic Harness Equipment in FV 432

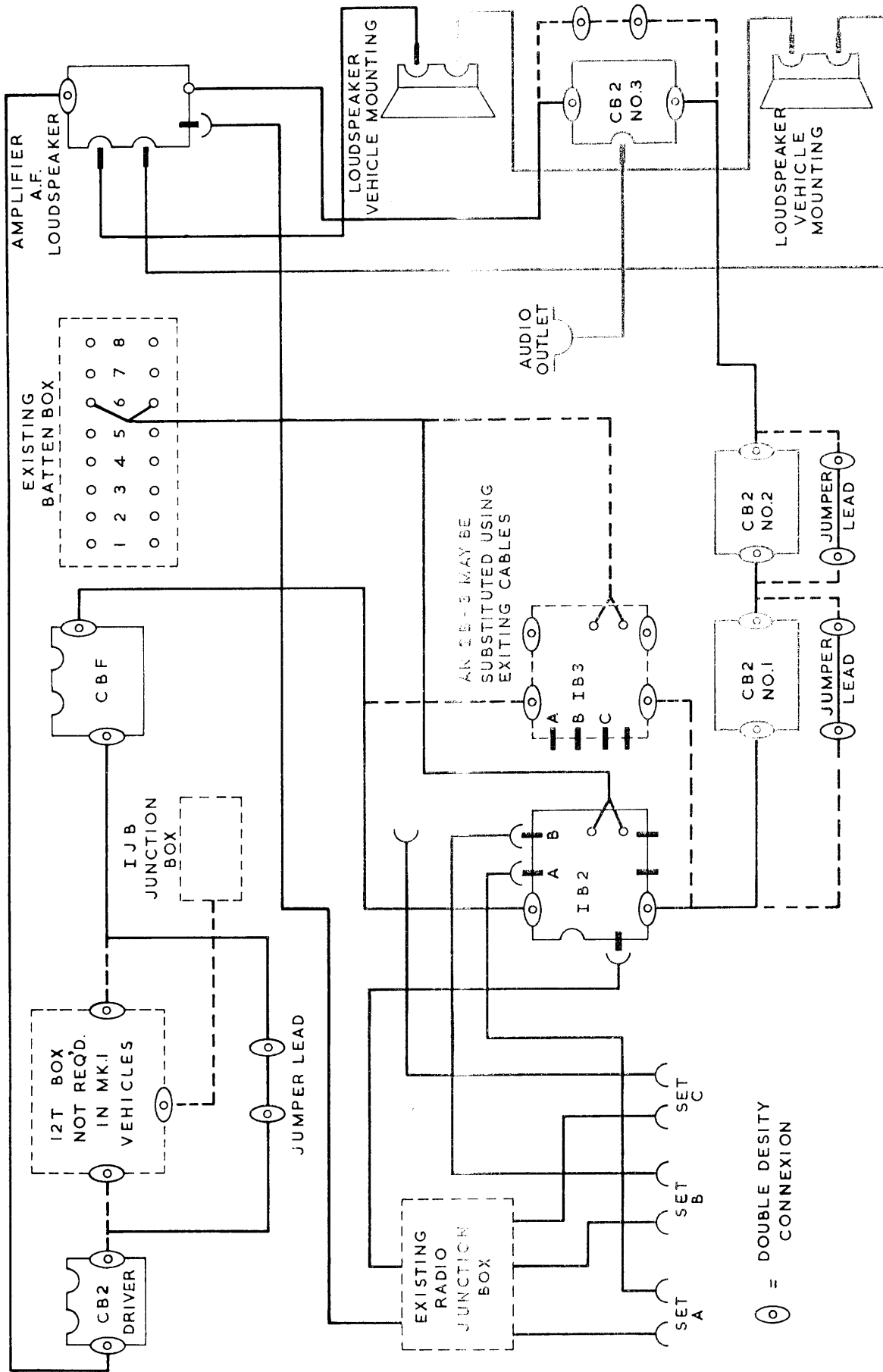


Fig 3 Block Diagram of Clansman Command Harness

687/3

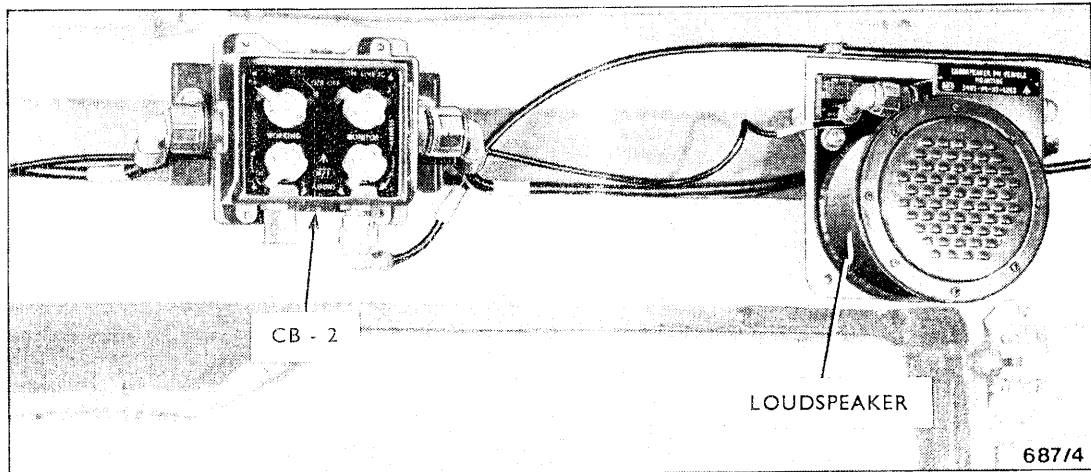
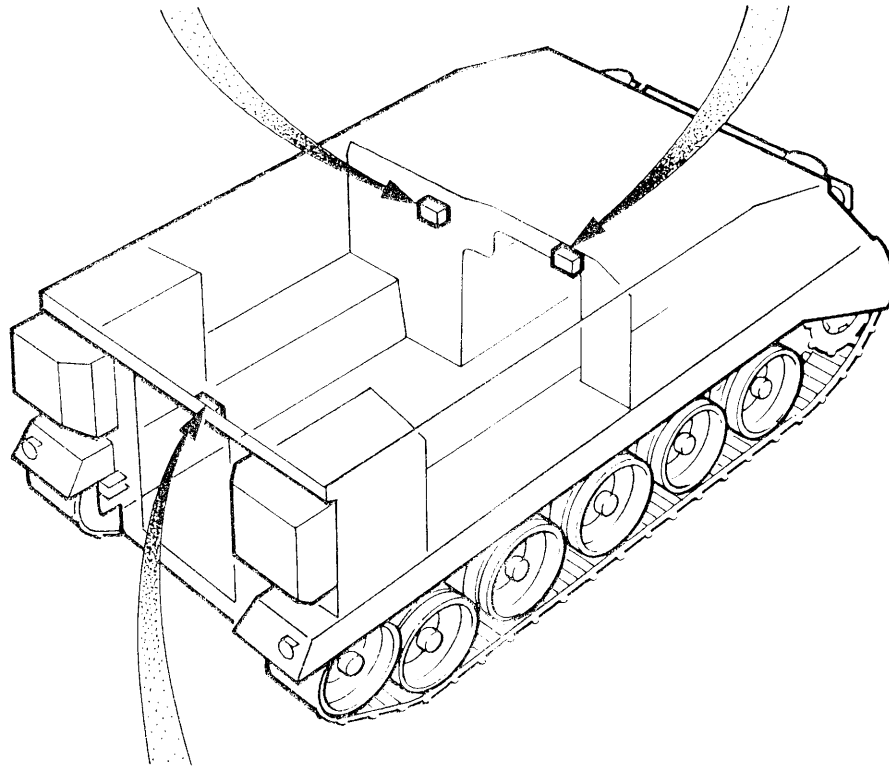
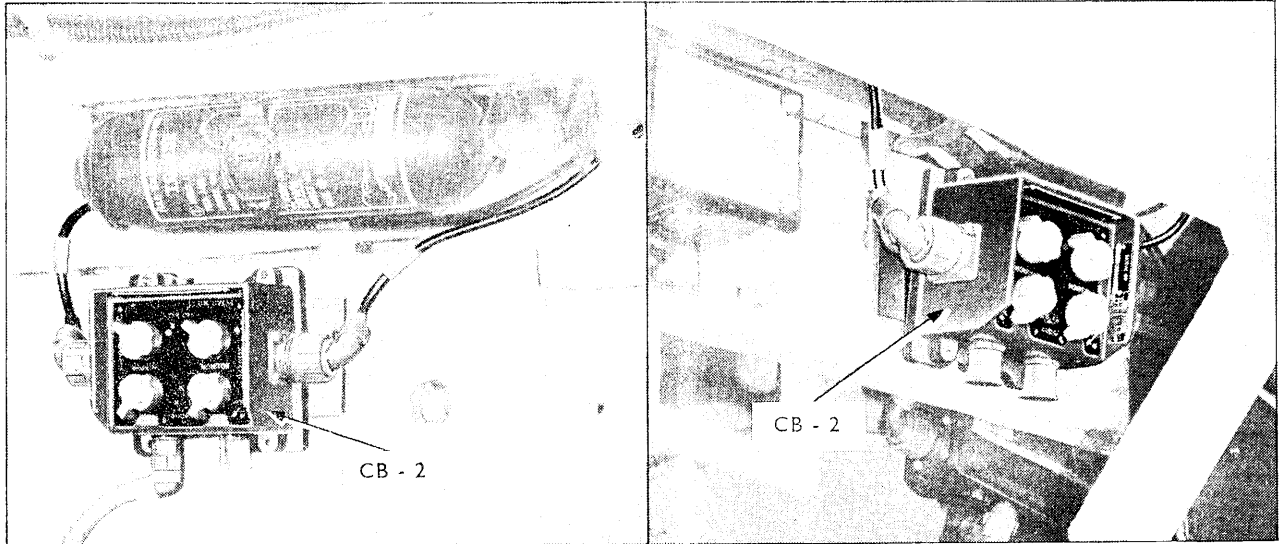


Fig 4 Location of Additional Equipment for Command Role