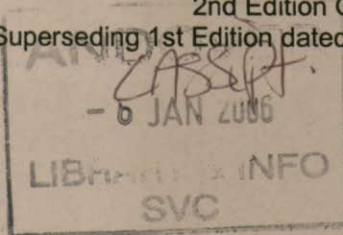




030623



CONDITIONS OF RELEASE

- 1 This information is released by the UK Government for defence purposes only.
- 2 This information must be afforded the same degree of protection as that afforded to information of an equivalent security marking originated by the recipient Government or as required by the recipient Government's security regulations.
- 3 This information may be disclosed only within the Defence Department of the recipient Government, except as otherwise authorized by the Ministry of Defence (Army).
- 4 This information may be subject to privately owned rights.

CARRIER PERSONNEL, FULL TRACKED FV432 MK 2 & 2/1 (BOWMAN)

INSTALLATION INSTRUCTIONS AND INDEX

THIS DOCUMENT IS THE PROPERTY OF HER BRITANNIC MAJESTY'S GOVERNMENT, and issued for the information of such persons only as need to know its contents in the course of their official duties. Any person finding this document should hand it into a British forces unit or to a police station for its safe return to the MINISTRY OF DEFENCE, (DSy (Pol)), MAIN BUILDING, WHITEHALL, LONDON, SW1A 2HB, with particulars of how and where found. THE UNAUTHORIZED RETENTION OR DESTRUCTION OF THE DOCUMENT IS AN OFFENCE UNDER THE OFFICIAL SECRETS ACTS OF 1911-1989. (When released to persons outside Government service, this document is issued on a personal basis and the recipient to whom it is entrusted in confidence, within the provisions of the Official Secrets Acts 1911-1989, is personally responsible for its safe custody and for seeing that its contents are disclosed only to authorized persons).

BY COMMAND OF THE DEFENCE COUNCIL

Ministry of Defence
Issued by

DEFENCE LOGISTICS ORGANISATION

~~UK RESTRICTED~~

~~UK RESTRICTED~~

AMENDMENT RECORD

Amdt No.	Incorporated by (Signature)	Date
1		
2		
3		
4		
5		
6		
7		
8		
9		
10		
11		
12		
13		
14		
15		
16		
17		
18		
19		
20		
21		
22		
23		
24		
25		
26		
27		
28		
29		
30		
31		

Amdt No.	Incorporated by (Signature)	Date
32		
33		
34		
35		
36		
37		
38		
39		
40		
41		
42		
43		
44		
45		
46		
47		
48		
49		
50		
51		
52		
53		
54		
55		
56		
57		
58		
59		
60		
61		
62		

UNRESTRICTED

UNRESTRICTED

PREFACE

Sponsor:
DGES(L)
File Ref:

Publication Agency:
LASS IPT DLO Andover
File Ref:
Project No:

INTRODUCTION

- 1 The Publication Agency is responsible for the allocation of instruction numbers.
- 2 All installation instructions as issued are to be recoded in manuscript by the recipient on the Numerical Installation Instruction Index provided. Amendments to individual instructions are to be recorded on the instruction amendment record. All extant instructions and amendments can be found listed in the main AESP index.

NOTE

The Publication Agency is responsible for the preparation and maintenance of the Instruction Index and will advise the Distribution Authority on the issue of completed and subsequent blank index pages necessary.

- 3 Services users should forward any comments on this publication through the channels prescribed in AESP 0100-P-011-013. An AESP Form 10 is provided after the preliminary pages of this publication; it should be photocopied and used for forwarding comments on this AESP to ATSA DLO.
- 4 AESPs are issued under Defence Council authority and where AESPs specify action to be taken, the AESP will of itself be sufficient authority for such action and also for the demanding of the necessary action.

INSTALLATION INSTRUCTION INDEX

Inst No. (1)	Subject (2)	Approval No./ Remarks (3)
1	Additional stowage bins	42/2/0016. Stowage bins to be fitted as required by the user.
2	Conversion of Carrier Personnel, Full Tracked FV432 Mk2 & 2/1 to accept 81mm Mortar	TBA
3	Conversion of Carrier Personnel, Full Tracked FV432 Mk2 & 2/1 to Command Post Role	Comd Post role permanent post BOWMANIZATION.
4	Installation of Portable Shelter to Carrier Personnel, Full Tracked FV432 Mk2 & 2/1	TBA
5	Installation of Internal Stowage to Carrier Personnel, Full Tracked FV432 Mk2 & 2/1	TBA
6	Conversion of Carrier Personnel, Full Tracked FV432 Mk2 & 2/1 to Ambulance Role	TBA
7	Installation of Milan Stowage to Carrier Personnel, Full Tracked FV432 Mk2 & 2/1	Capability no longer required.
8	Installation of Cooler for Carriage of Medical Stores to Carrier Personnel, Full Tracked FV432 Mk2 & 2/1	USUR LAND/03/TE/149

(continued)

INSTALLATION INSTRUCTION INDEX (continued)

Inst No. (1)	Subject (2)	Approval No./Remarks (3)
9	Conversion of Carrier Personnel, Full Tracked FV432 Mk2 & 2/1 to accept Generator Mounting and Telescopic Mast	43-2-0018/19/20/21
10		
11		
12		
13		
14		
15		
16		
17		
18		
19		
20		
21		
22		
23		
24		
25		
26		
27		
28		
29		
30		
31		
32		
33		
34		
35		
36		
37		
38		
39		
40		
41		
42		
43		
44		

CARRIER, FULL TRACKED, FV432 MK 2 AND 2/1

INSTALLATION INSTRUCTION No 1

Sponsor

Publication Agency:
DLO Chertsey
Project No: S01008(131)
File Ref:

AMENDMENT RECORD

Amdt No.	Incorporated By (Signature)	Date
1		
2		
3		

Amdt No.	Incorporated By (Signature)	Date
4		
5		
6		

Subject: Additional stowage bins

INTRODUCTION

1 On receipt of this instruction all unofficial stowage modifications must be removed from all FV430 Series vehicles. This is a safety requirement and must be complied with.

2 This installation introduces additional stowage bins on the roof, on the left hand side of the hull and at the rear of the vehicle above the door. The fitting of these additional stowage bins is on a mix and match basis dependants on the user's requirement.

Limitations on use of equipment: Nil.

APPLICABILITY

3

3.1 The information in this instruction applies to all FV432 vehicles except mortar, Cymbeline and FV432 Bates.

3.2 These variants can fit the side and rear stowage bins, if required, using the information contained in this instruction. If the roof mounted stowage bin is required for FV432 BATES the installation instruction for FV426, contained in AESP 2350-T-253-412 is to be followed.

MAN HOUR CONTENT

4

4.1 Estimated time for fitting: 4 Man hours.

4.2 Estimated time for reversion: 0.5 Man hours.

INSTALLATION IMPLEMENTATION PLAN

5 This instruction is to be implemented by units authorised to carry out level 2 maintenance.

Action required by

6

6.1 Units holding subject vehicles:

6.1.1 The stores listed at Table 1 will be issued on the authority of the Equipment Support Manager (ESM) FV430 who can be contacted on:

Andover Mil (94391) ext 3668 or STD 01264 383668

6.1.2 The stores listed at Table 1 can be demanded through the ESM using the form at Annex A.

6.1.3 Record installation details in the vehicle documents (AB413)

6.1.4 On receipt of stores, request REME/Workshop to embody the installation kit.

6.2 Army units and establishments embodying this instruction:

6.2.1 When requested by the user, embody this installation, or remove this installation.

6.2.2 Units embodying/removing this installation are to enter completion/removal details in the vehicle documents (AB413).

6.3 All recipients of this instruction. Add particulars to AESP 2350-T-251-412**Equipment, tools and stores**

7

7.1 Stores required are listed at Table 1.**TABLE 1. STORES TO BE DEMANDED**

Item (1)	NSN/Part No (2)	Designation (3)	Qty (4)	Remarks (5)
		ROOF STOWAGE BIN		
1	2540-99-788-8101	Box, accessories stowage.	1	
2	2540-99-760-0067	Spigot.	4	
3	5340-99-186-8948	Bracket, mounting	1	
4	5306-99-122-2792	Bolt, M12 x 70	4	
5	5310-99-138-9229	Washer, Spring M12.	4	
6	5310-99-122-6477	Washer, Flat M12	4	
7	5310-99-122-5298	Nut.	4	
8	2540-99-582-5606	Cover.	1	
		SIDE STOWAGE BIN		
9	2540-99-571-1747	Box, accessories stowage.	1	
10	2540-99-695-2886	Pad	3	
11	5306-99-941-6347	Bolt, M12 x 30	9	
12	5310-99-138-9229	Washer, Spring M12.	9	
13	5310-99-122-6477	Washer, Flat M12	9	
		REAR STOWAGE BINS		
14	2540-99-257-7553	Box, accessories stowage.	2	

(continued)

TABLE 1. STORES TO BE DEMANDED (continued)

Item (1)	NSN/Part No (2)	Designation (3)	Qty (4)	Remarks (5)
15	5340-99-225-7195	Plate, mounting	4	
16	5305-99-122-5256	Screw, M8 x 50	8	
17	5310-99-138-9227	Washer, Spring M8	8	
18	5310-99-122-6475	Washer, Flat M8	8	
19	5310-99-122-5296	Nut hex M8	8	

7.2 Stores to be removed and stored.

7.2.1 The stores listed in Table 2 are to be removed when fitting the roof stowage bin.

Item (1)	NSN/Part No (2)	Designation (3)	Qty (4)	Remarks (5)
1	2540-99-834-9254	Catch assembly	1	
2	5305-99-941-0540	Screw	4	
3	5310-99-944-0550	Washer, Lock	4	
4	5310-99-941-8635	Washer, Flat	4	
5	2510-99-865-7033	Bracket	1	
6	5310-99-944-0552	Washer, Lock	4	
7	5310-99-941-0928	Nut	4	

ASSOCIATED MODIFICATIONS

8 Nil.

INSTALLATION ILLUSTRATIONS

9

Fig

- 1 Stowage bins available for FV432.
- 2 Hull mountings required to fit the roof stowage bin
- 3 Hull mountings required to fit the side stowage bin
- 4 Hull mountings required to fit the rear stowage bins

INSTALLATION PROCEDURE

Sequence of operations

10 The procedure to install the stowage options is divided into three separate installations. Fig 1 indicates the positions of each of the stowage options that may be installed. Carry out the installation procedure/procedures as applicable.

WARNINGS

- (1) **PERSONAL INJURY. ENSURE THAT THE STOWAGE BINS ARE EMPTY BEFORE FITTING.**
- (2) **PERSONAL INJURY. ENSURE THAT MANUAL HANDLING PROCEDURES ARE ADHERED TO WHEN FITTING THE STOWAGE BINS.**

NOTE

- (1) Welding is to be carried out by a Class 1 REME metalsmith to current regulations.
- (2) Due to the location of the fuel filler cap, fuel tank and the insulation fitted inside the hull, alternately skip weld the mountings, to prevent excessive heat build up in the hull, until a 10mm continuous fillet weld has been completed.

Roof stowage bin

- 11 Ensure the mortar hatch is securely closed. Remove and retain the left hand mortar hatch catch, bracket and fittings for future use.
- 12 Fit spigots (Item 2) to stowage bin (Item 1, using items 4,5,6 and 7)
- 13 Fit stowage bin (Item 1) to vehicle roof ensuring that the spigots (Item 2) are located at the dimensions indicated at Fig 2 (Redundant flotation screen fittings may have to be removed). Fit bracket (Item 3) under the spigot as indicated at arrow 'A'. Weld bracket and spigots in position.
- 14 Locally manufacture a suitable bar and weld between the left hand mortar hatch and the stowage bin, to prevent the left hand mortar hatch moving if the right hand mortar hatch is opened. Restore paint finish to current regulations. Fit cover (Item 8)

Side stowage bin

- 15 Locate pads (Item 10) at the positions on the hull as indicated at Fig 3. Weld pads in position and restore paint finish to current regulations.
- 16 Fit stowage bin (Item 9) to pads (Item 10) using (Items 11,12 and 13). (Both front and rear exhaust clamps may have to be cut away to provide clearance for the stowage bin)

Rear stowage bin

- 17 Locate mounting plates (Item 15) at the positions on the hull as indicated at Fig 4. Weld the mounting plates in position to current regulations. Using the holes in the mounting plates as a template, drill holes through the flotation platform. Restore paint finish to current regulations.
- 18 Fit stowage bins (Item 14) to the mounting plates (Item 15, using items 16, 17, 18 and 19).

RESTORATION PROCEDURE

- 19 When the stowage bins are no longer required to be fitted to the vehicle they are to be removed. The spigots and bracket (Items 2 and 3), pads (Item 10) and mounting plates (Item 15) are to remain fitted to the vehicle.

WARNINGS

- (1) **PERSONAL INJURY. ENSURE THAT THE STOWAGE BINS ARE EMPTY BEFORE FITTING.**
- (2) **PERSONAL INJURY. ENSURE THAT MANUAL HANDLING PROCEDURES ARE ADHERED TO WHEN FITTING THE STOWAGE BINS.**

Roof stowage bin

- 20 Remove locally manufactured retaining bar fitted at Para 14. Remove fittings (Items 4, 5, 6 and 7). Remove stowage bin (Item 1) and cover (Item 8) from vehicle. Retain cover (Item 8) and fittings (Items 4, 5, 6 and 7) with stowage bin (Item 1).
- 21 Refit the catch, bracket and fittings assembly removed at Para 11.

Side stowage bin

- 22 Remove fittings (Items 11, 12 and 13) and side stowage bin (Item 9).
- 23 Retain fittings (Items 11, 12 and 13) with stowage bin.
- 24 Blank the threads in the pads using suitable fittings to prevent thread damage.

Rear stowage bin

- 25 Remove fittings (Items 16, 17, 18 and 19) from the rear stowage bin to be removed, and remove stowage bin (Item 14)
- 26 Retain fittings (Items 16, 17, 18 and 19) with stowage bin.
- 27 Repeat for second rear stowage bin.

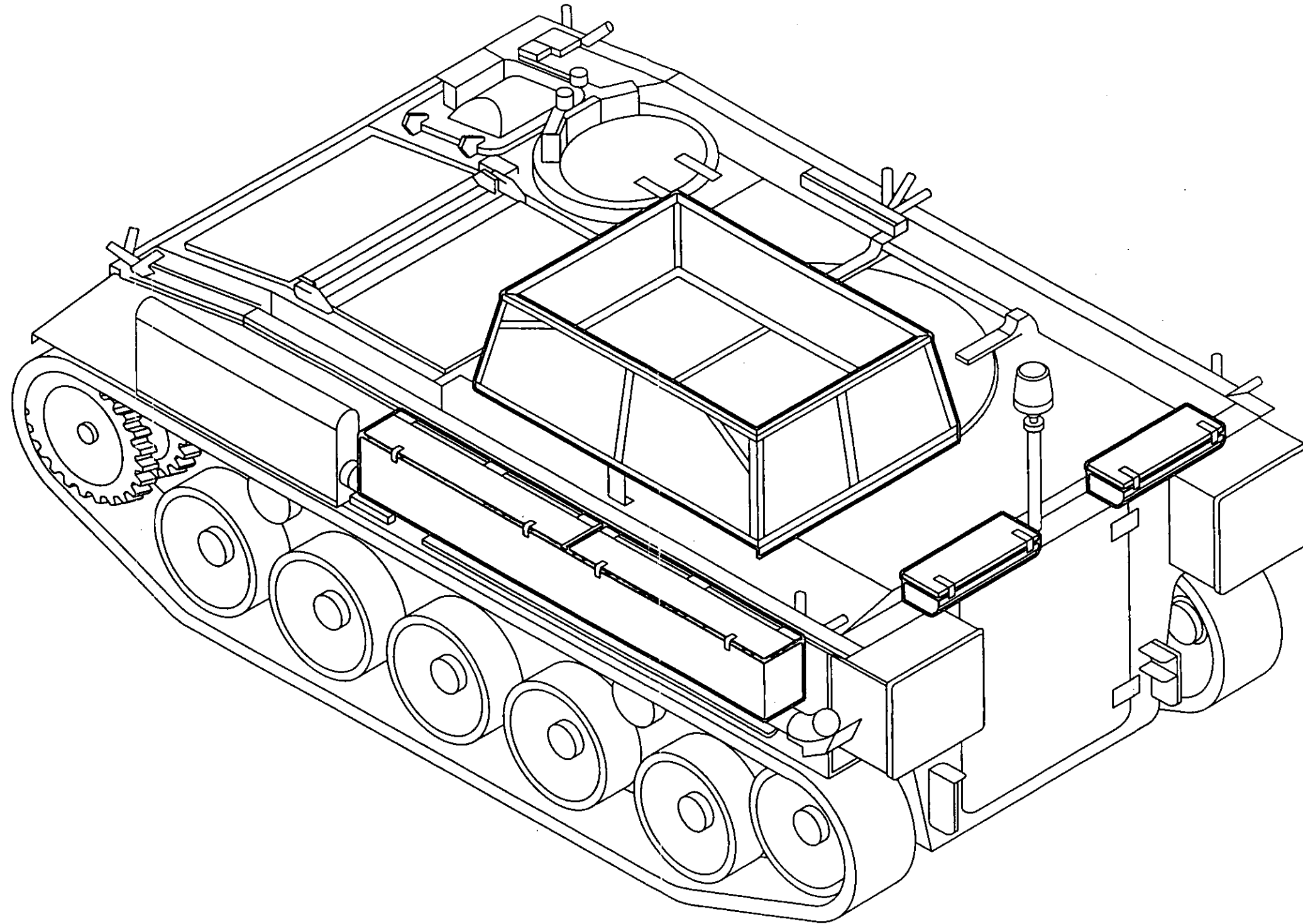


Fig 1 Stowage bins available for FV432

V14811/2

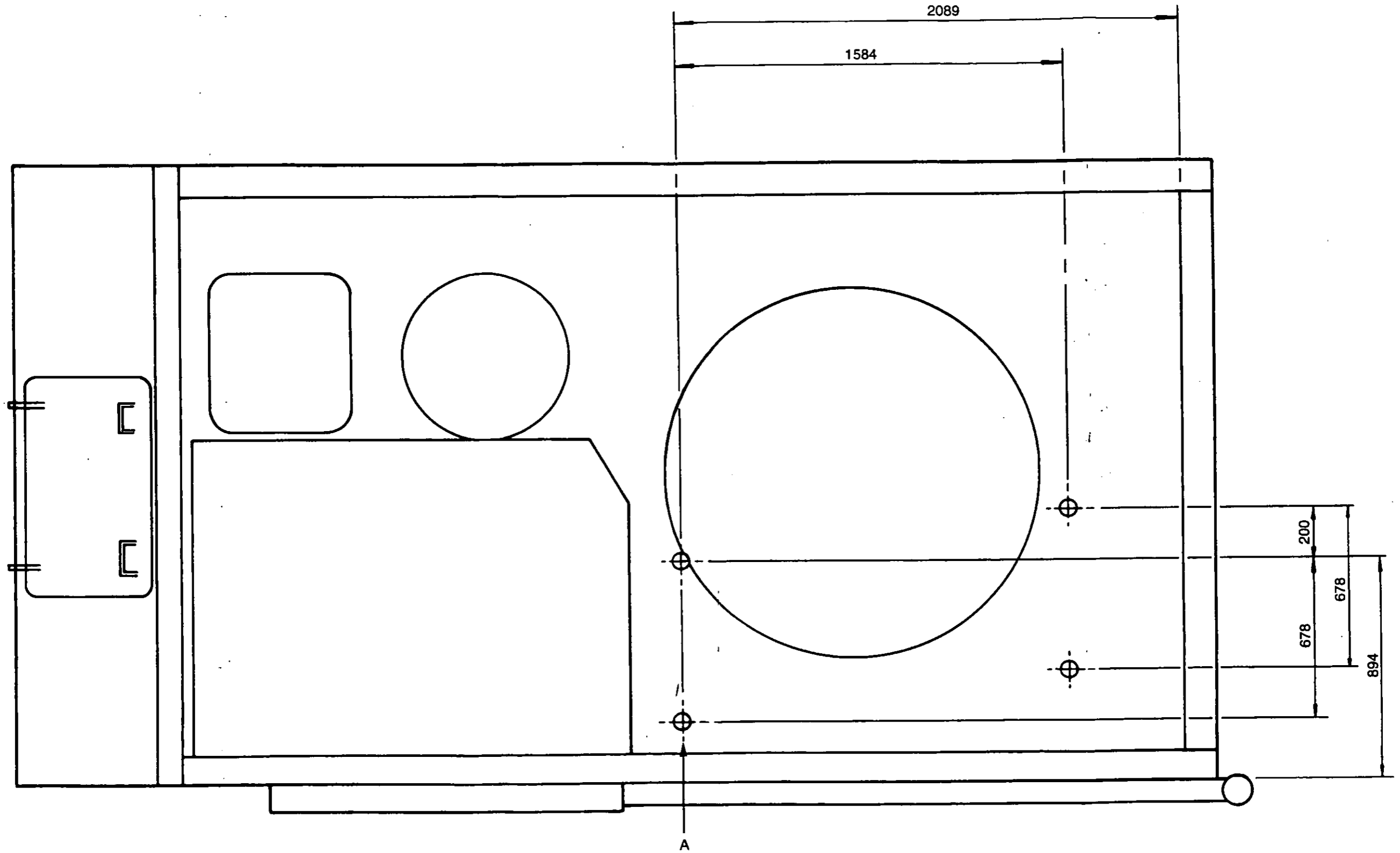


Fig 2 Hull mountings required to fit roof stowage bin

V 14812/2

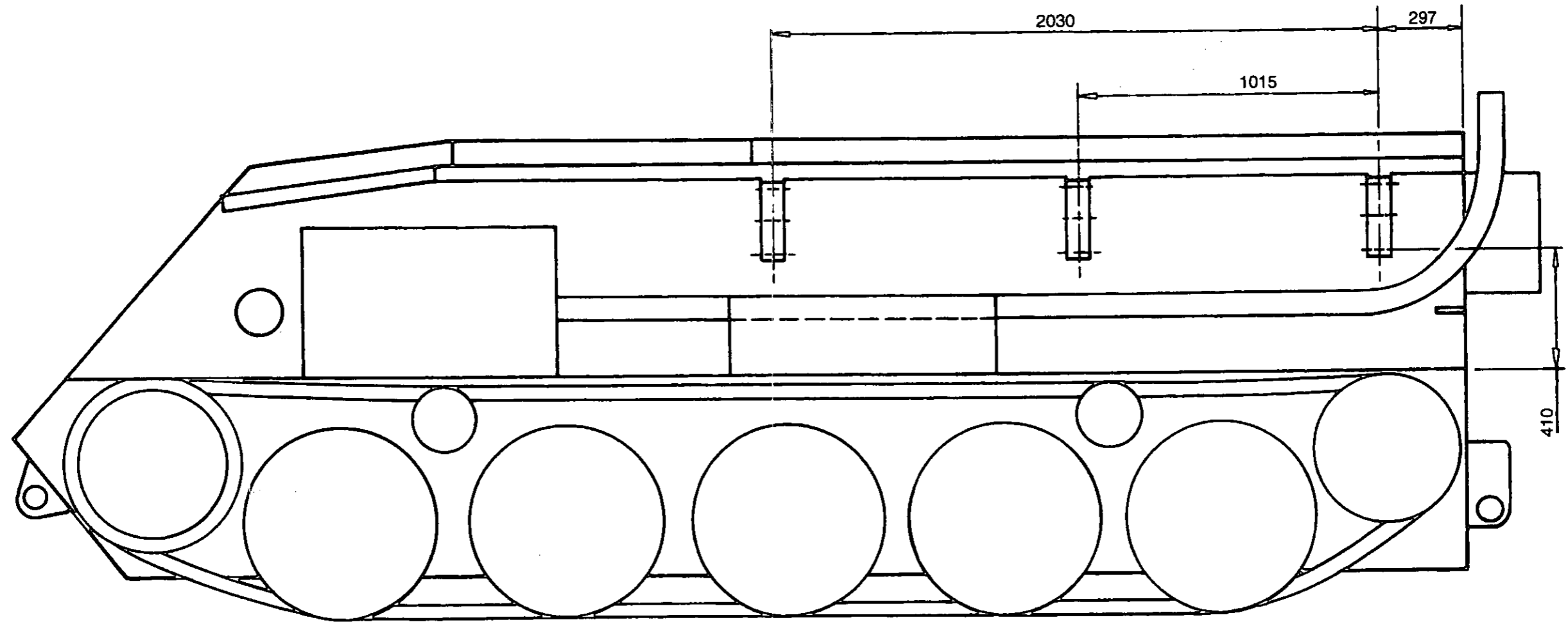


Fig 3 Hull mountings required to fit side stowage bin

V 14812/1

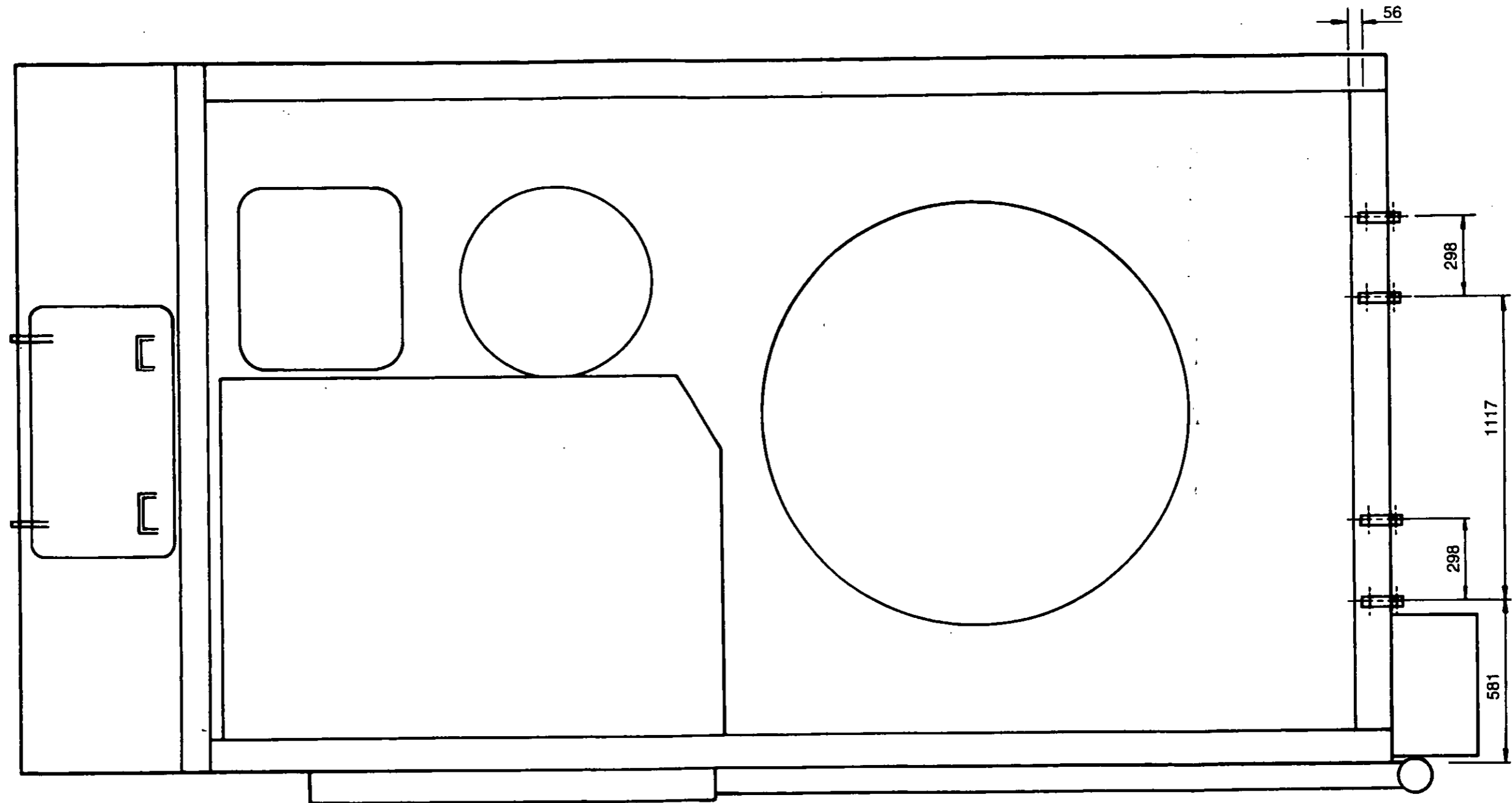


Fig 4 Hull mountings required to fit rear stowage bin

V 14812/3

~~UNRESTRICTED~~

~~UNRESTRICTED~~

ANNEX A

REQUEST FOR FV430 ADDITIONAL STOWAGE BINS

To: FV430 ESM LASS IPT DLO Monkton Road Andover Hampshire SP11 8HT
--

I request the issue of the following stowage bins for VRN _____

The role that this vehicle is used for is:
(eg, Amb, Command Post, Mortar Role)

The variant is:

Item No (1)	NSN (2)	Description (3)	Qty (4)
	Roof bin stowage		
1	2540-99-788-8101	Box, accessories stowage	
2	2540-99-760-0067	Spigot	
3	5340-99-186-8948	Bracket support	
4	2540-99-582-5606	Cover	
	Side bin stowage		
1	2540-99-571-1747	Box, accessories stowage	
2	2540-99-695-2886	Pad tapping	
	Rear bin stowage		
1	2540-99-257-7553	Box, accessories stowage	
2	5340-99-225-7195	Plate	

From:

Unit:	Delivery Address:	Required date of delivery
		Required time of delivery
		Contact name:
		Tel no
UIN:		
Name:	Signature:	Date:

~~UNRESTRICTED~~

~~UNRESTRICTED~~

CARRIER PERSONNEL FULL TRACKED FV432 MK 2 AND 2/1

INSTALLATION INSTRUCTION No.2

AMENDMENT RECORD

Amdt No.	Incorporated By (Signature)	Date	Amdt No.	Incorporated By (Signature)	Date
1			4		
2			5		
3			6		

SUBJECT: CONVERSION OF CARRIER PERSONNEL, FULL TRACKED FV432 MK 2 & 2/1 TO ACCEPT 81MM MORTAR

(Approval No)

INTRODUCTION

1 This instruction details the procedures for the removal of internal equipment and the fitting of the 81mm mortar mount. This will allow the vehicle to carry out the 81mm mortar role.

NOTE

In the mortar role the FV432 rear door cannot be used for entry/exit due to the installation of bomb racking. Entry/exit is therefore made through the commander's hatch. (Refer to Para 6)

APPLICABILITY

2 The information in this instruction applies to FV432 only.

ASSOCIATED PUBLICATIONS

3 The associated publications are as follows:

<u>Reference</u>	<u>Title</u>
AESP 1015-C-100-Octad	Equipment 81mm Mortar
AESP 2350-T-251-201	Carrier Personnel Full Tracked FV432 MK2 and 2/1

MAN HOUR CONTENT

4 Estimated time required

- 4.1 Stripping and assembling 4 man-hours.
- 4.2 Embodiment 8 man-hours.

INSTALLATION IMPLEMENTATION PLAN

5 This installation instruction is to be implemented by units authorised to undertake Level 2, 3 and 4 maintenance.

ASSOCIATED MODIFICATIONS

6 Users are to ensure that the following Modification Instruction has been fully implemented:

6.1 AESP 2530-T-250-811 Mod Instr No 1, EMER TV 107/2 Mod Instr No 90.
Title: Commanders hatch, external locking device

6.2 The vehicle communication fit has been configured for the Mortar role. Refer to IETP (TBA) Bowman radio communication.

Action required by

7 Units instructed by GS (or) MoD Army, or having an equipment entitlement for 81mm mortar role.

7.1 Demand conversion kit (Table 2, Ser 1) if necessary, and hand over to supporting REME workshop.

7.2 Enter details and installation instruction number in vehicle logbook.

7.3 Hand vehicle over to supporting workshop, complete with 81mm mortar barrel and sight unit.

8 REME units affected.

8.1 Carry out work as detailed in this instruction.

Equipment and stores

9 Equipment required

10 Table 1 details the equipment required in order to carry out this instruction. In addition, lifting equipment with minimum hook height of 4.4m (14 ft 6 in.) and a minimum SWL of 762 kg (1680 lb) is required.

TABLE 1 EQUIPMENT REQUIRED

Serial (1)	NSN/Part No. (2)	Designation (3)	Qty (4)
1	3940-99-960-3858	Chain, sling, 0.375in. x 3ft – 90deg	1
2	3940-99-960-3857	Chain, sling, 0.375in. x 6ft – 90deg	1
3	FV714277	Bracket, sight carrier	1
4	4030-99-960-4367	Shackles, small bow, 1016kg (2240lb)	4

Stores required

11 Table 2 details the stores required to carry out this instruction

TABLE 2 STORES REQUIRED

Serial (1)	NSN/Part No. (2)	Designation (3)	Qty (4)
1	1010-99-930-6562	Conversion kit, mortar	1

Stores to be removed

12 Table 3 details the stores to be removed at Para 15

TABLE 3 STORES TO BE REMOVED

Serial (1)	NSN/Part No (2)	Designation (3)	Qty (4)
1	LV9ACR/2540-99-865-6770	Tray, seat squab	6
2	LV9ACR/2540-99-865-6771	Bracket, double action, bench seat	12
3	LV9ACR/2540-99-865-6772	Cushion, seat vehicular, personnel	6

Storage

13 Redundant items, identified by part number and vehicle number, returned by REME after embodiment of mortar role must be kept in safe custody, as they will be required for re-installation when vehicle is to be converted to other roles.

Stores to be issued automatically

14 Table 4 details the stores that will be issued automatically.

TABLE 4 STORES TO BE ISSUED AUTOMATICALLY

Serial (1)	NSN/Part No. (2)	Designation (3)	Qty (4)
		Double seat assembly:	
1	2540-99-817-9423	Seat tray	1
2	5340-99-840-2059	Side legs	2
3	TBA	Locking handle	1
4	5340-99-364-0061	Seat attachment bracket	1
5	5340-99-500-1257	Floor bracket for side legs	2
6	5315-99-413-7891	Fulcrum pin for floor brackets	2
		Single seat assembly:	
7	TBA (FV 602916)	Seat tray	1
8	2540-99-753-5379	Seat squab	1
		Stowage grilles RH pannier:	
9	2540-99-831-6575	Stowage grille	3
10	5340-99-301-1436	Support channel	1
11	5340-99-623-8384	Fixing angle	1
12	5340-99-759-5943	Support bracket	3
		Bomb rack LH pannier:	
13	2590-99-772-9388	Bomb rack	1
14	TBA (FV603253)	Rack support channel	1
15	5340-99-398-0740	Adaptor plate, rear	1
16	5340-99-535-4948	Adaptor plate, front	1
17	5340-99-577-3493	Tie bar	4
18	5310-99-500-1258	Spacers (between bomb rack and pannier)	4
		Weapons mounting plate:	
19	TBA (FV650856)	Weapons mounting plate	1

Serial (1)	NSN/Part No. (2)	Designation (3)	Qty (4)
20	5310-99-500-1258	Distance piece	2
		Transverse rail:	
21	1095-99-828-0104	Transverse rail	1
22	2590-99-978-1753	Bracket LH	1
23	2590-99-978-1754	Bracket RH	1
24	2540-99-810-8467	Pin and chain	2
		Rear bomb rack:	
25	TBA	Rear bomb rack	1
26	5365-99-138-1943	Pillar	2
27	5340-99-660-9333	Centre bracket	1
28	5340-99-573-1660	Bracket, rack to rear plate	2
29	TBA (FV603117)	Bracket, rack to side plate	1
30	5340-99-663-4508	Bracket, rack to side plate	1
31	5340-99-598-7533	Bracket, rack to pillar	2
		Rear door bomb rack:	
32	TBA	Bomb rack	
		Mortar mounting:	
33	2590-99-816-3769	Mortar mounting	
34	1015-99-810-8475	3/4in. UNC special bolts	
35	1290-99-801-2754	Commander's level bubble	
36	2590-99-822-3645	Steel barrel plug	
		General items	
37	5305-99-941-0513	Screw machine 1/4 UNF x 0.75in.	4
38	TBA	Screw machine 5/16 UNF x 0.75in.	6
39	5305-99-941-0527	Screw machine 5/16 UNF x 1in.	16
40	5305-99-941-0541	Screw machine 3/8 UNF x 1in.	3
41	5306-99-941-0314	Bolt machine 3/8 UNF x 0.75in.	4
42	5306-99-941-0318	Bolt machine 3/8 UNF x 2.75in.	8
43	5305-99-941-0565	Screw machine 1/2 UNF x 0.75in.	3
44	5305-99-941-0566	Screw machine 1/2 UNF x 1in.	11
45	5305-99-941-0569	Screw machine 1/2 UNF x 0.25in.	2
46	5306-99-941-0352	Bolt machine 1/2 UNF x 4.5in.	2
47	5305-99-941-0582	Screw machine 5/8 UNF x 1in.	4
48	5305-99-941-7602	Screws wood round head No. 10 x 0.75in.	8
49	5310-99-941-8577	Washer flat 0.3in.	22
50	5310-99-941-7628	Washer flat 0.375in.	23
51	5310-99-941-8637	Washer flat 0.5in.	18
52	5310-99-941-8639	Washer flat 0.625in.	4
53	5310-99-941-8640	Washer flat 0.75in.	12
54	5310-99-944-0548	Washer lock 0.25in.	4
55	5310-99-944-0549	Washer lock 0.3in.	22
56	5310-99-944-0550	Washer lock 0.375in.	19

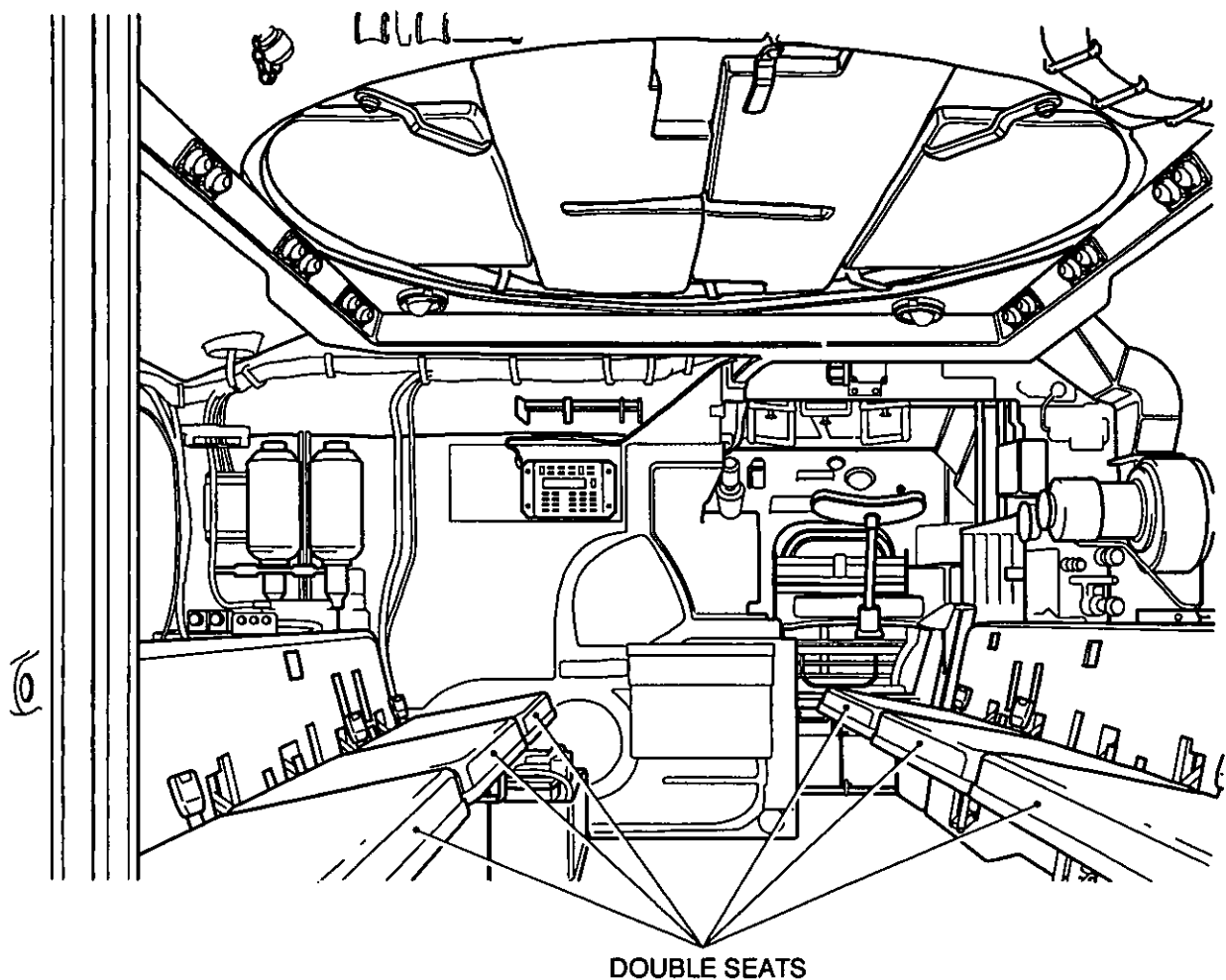
Serial (1)	NSN/Part No. (2)	Designation (3)	Qty (4)
57	5310-99-944-0522	Washer lock 0.5in.	18
58	5310-99-944-0554	Washer lock 0.625in.	4
59	5310-99-944-0555	Washer lock 0.75in.	12
60	5310-99-941-0925	Nut precision 0.3in. UNF	2
61	5310-99-941-0926	Nut precision 0.375in. UNF	11
62	5310-99-941-7126	Nut self-locking 0.375in UNF	8
63	5310-99-941-0928	Nut precision 0.5in. UNF	2
64	5315-99-944-0172	Pin keep split 0.0625in. x 0.875in.	4

INSTALLATION PROCEDURE

Removal of stores

15 Remove the following items from the personnel compartment:

15.1 The six double seats (Fig 1 refers), complete with cushions, trays and brackets, from the LH and RH lower side plates.



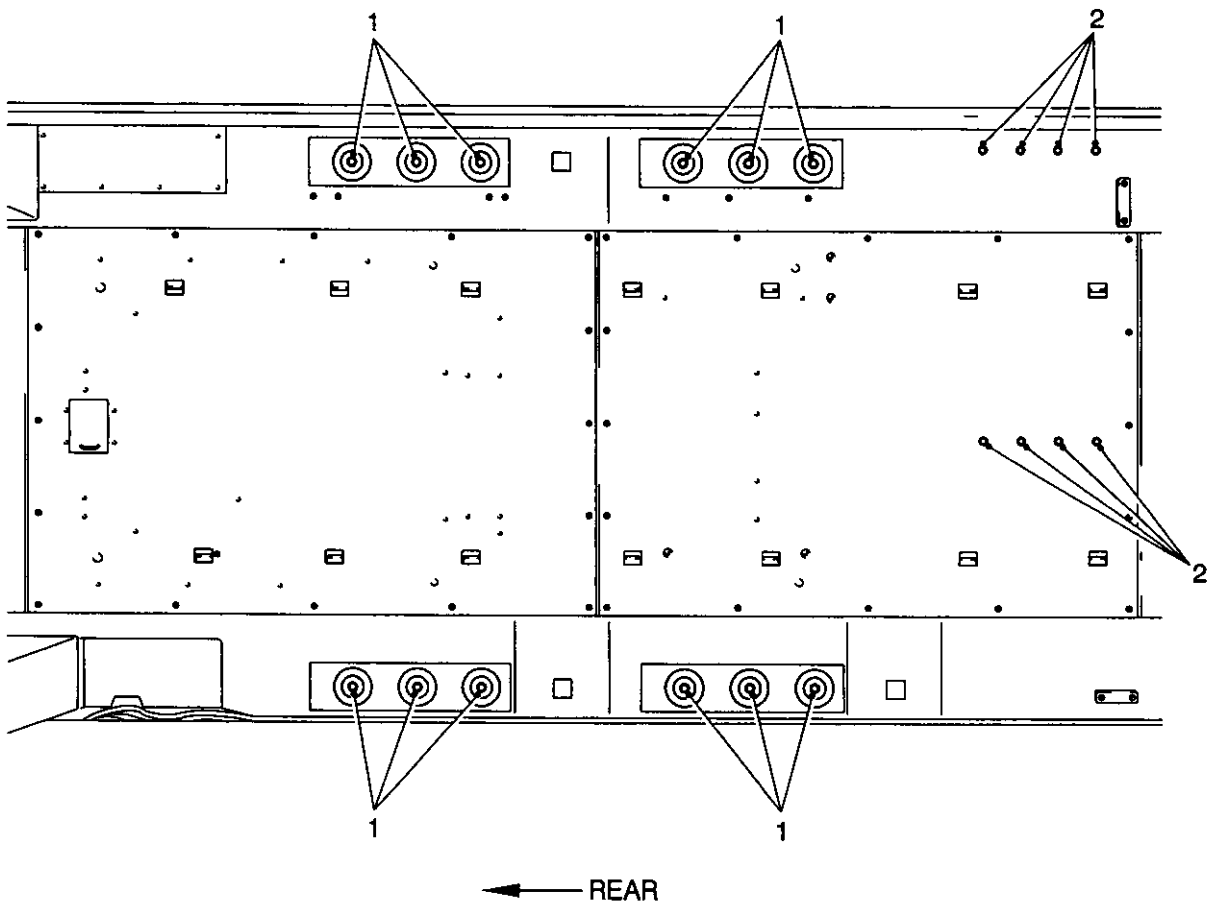
430/40001

Fig 1 View of personnel compartment

Ventilation batteries

16 Repositioning the ventilation system battery carrier frame, as follows:

- 16.1 Disconnect the ventilation system batteries and remove the batteries from vehicle.
- 16.2 Remove the screws securing the battery carrier to the floor and move the carrier to the rear of the vehicle.
- 16.3 Identify the four tapped holes in the vehicle floor plate; refer to Fig 2 (2).
- 16.4 Remove the screws securing the front floor plate. Lift the floor plate and transfer the blanking screws from the identified holes to the other unoccupied screwed holes.
- 16.5 Refit and secure the floor plate in position. Place the battery carrier frame in its new position, Fig 3 refers, and secure with the LH side screws only, the RH side screws will be fitted when a replacement double seat is fitted.



432/400

1 Mortar mount fixing holes

2 Battery carrier-fixing holes

Fig 2 Identification of tapped holes in vehicle floor

Replacement double seat

17 Fit a replacement double seat, as follows:

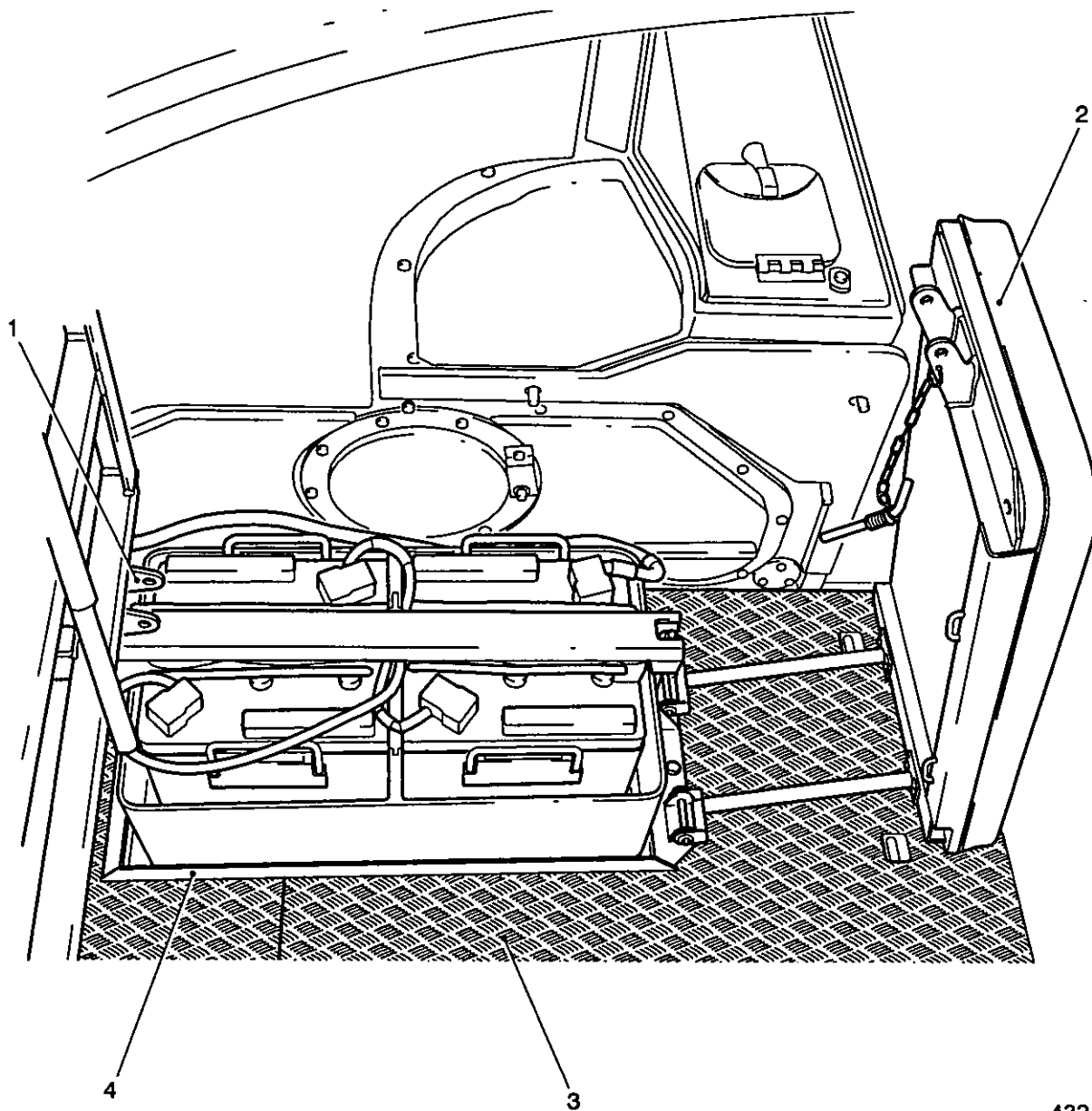
- 17.1 Fit the seat attachment bracket (Fig 3 (1)) to the LH lower wall.

17.2 Remove a seat cushion from one of the double seats previously removed from the vehicle, (Sub-Para 15.1), and fit to the replacement double seat tray.

17.3 Position the replacement seat assembly (2) over the ventilation system batteries carrier frame (4) and secure to the floor using the two inner carrier-securing screws.

17.4 Fit the two outer securing screws of the carrier frame.

17.5 Refit the ventilation system batteries and secure the seat in the travelling position.



432/401

- | | | | |
|---|-------------------------|---|-----------------------|
| 1 | Seat attachment bracket | 3 | Front floor plate |
| 2 | Double seat assembly | 4 | Battery carrier frame |

Fig 3 View of new double seat folded back and ventilator

Replacement single seat

18 Fit a replacement single seat, as follows:

18.1 Fit a replacement single seat (Fig 4 (6)) to the RH lower sidewall using existing vehicle fittings.

Right hand pannier stowage grille

19 Fit a RH pannier stowage grille (Fig 4 (4)), as follows:

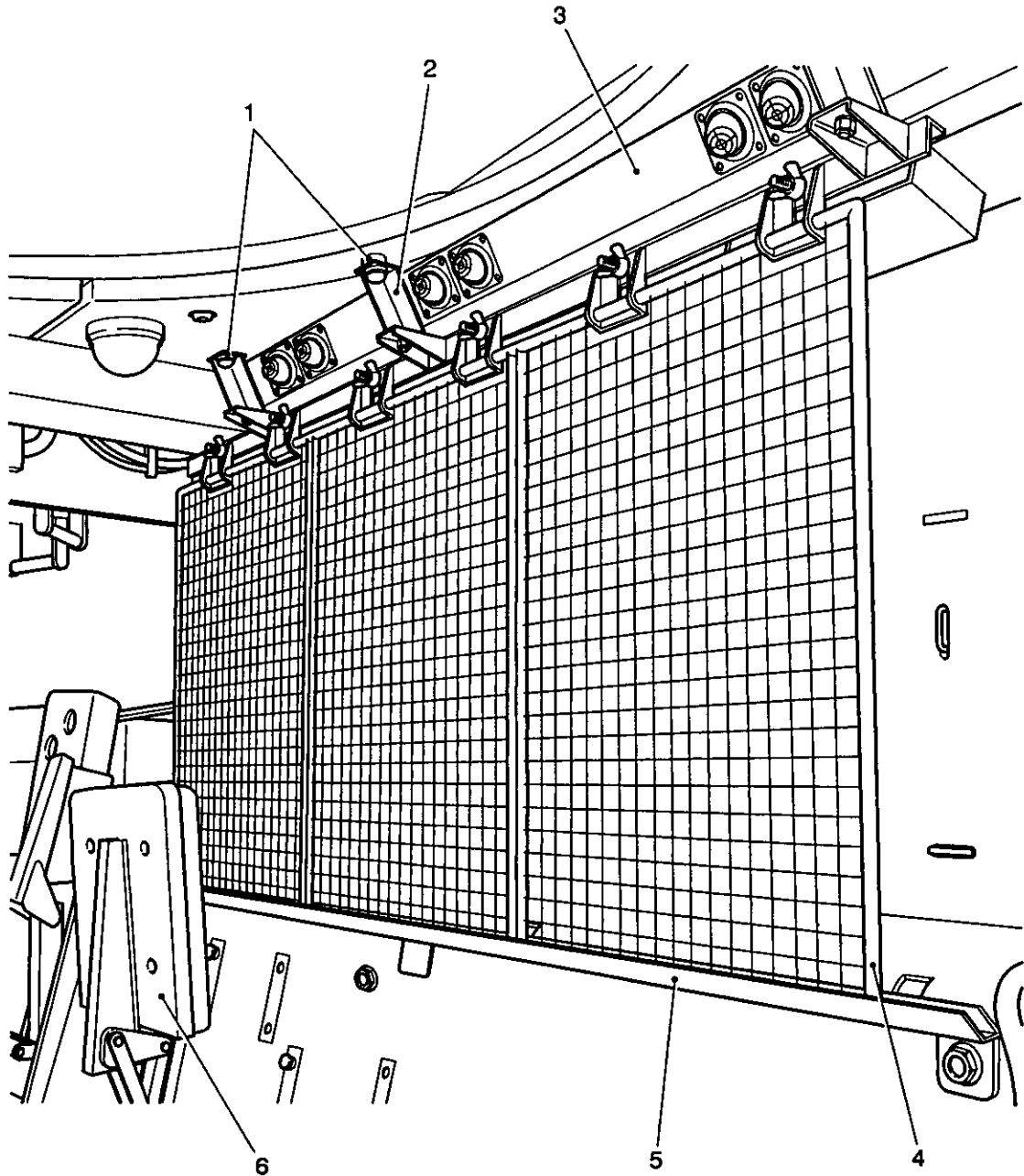
19.1 Fit the bottom support channel (5) to the RH lower sidewall.

19.2 Assemble the support brackets (2) to the top fixing angle and fit the assembly into the vehicle using the tapped bosses (1) on vehicle roof for fixing points.

19.3 Fit the stowage grille into the bottom support channel and secure to the top-fixing angle (3).

NOTE

On some Mk 2/1 vehicles the front stowage grille cannot be fitted, as it fouls the ventilating fan casing; therefore return the stowage grille to the unit, Para 11 refers.



430/40002

- | | | | |
|---|-------------------------------|---|--------------------------------|
| 1 | Tapped bosses on vehicle roof | 4 | Stowage grills |
| 2 | Support bracket | 5 | Bottom support channel |
| 3 | Top fixing angle | 6 | Single seat in folded position |

Fig 4 View of right hand pannier stowage

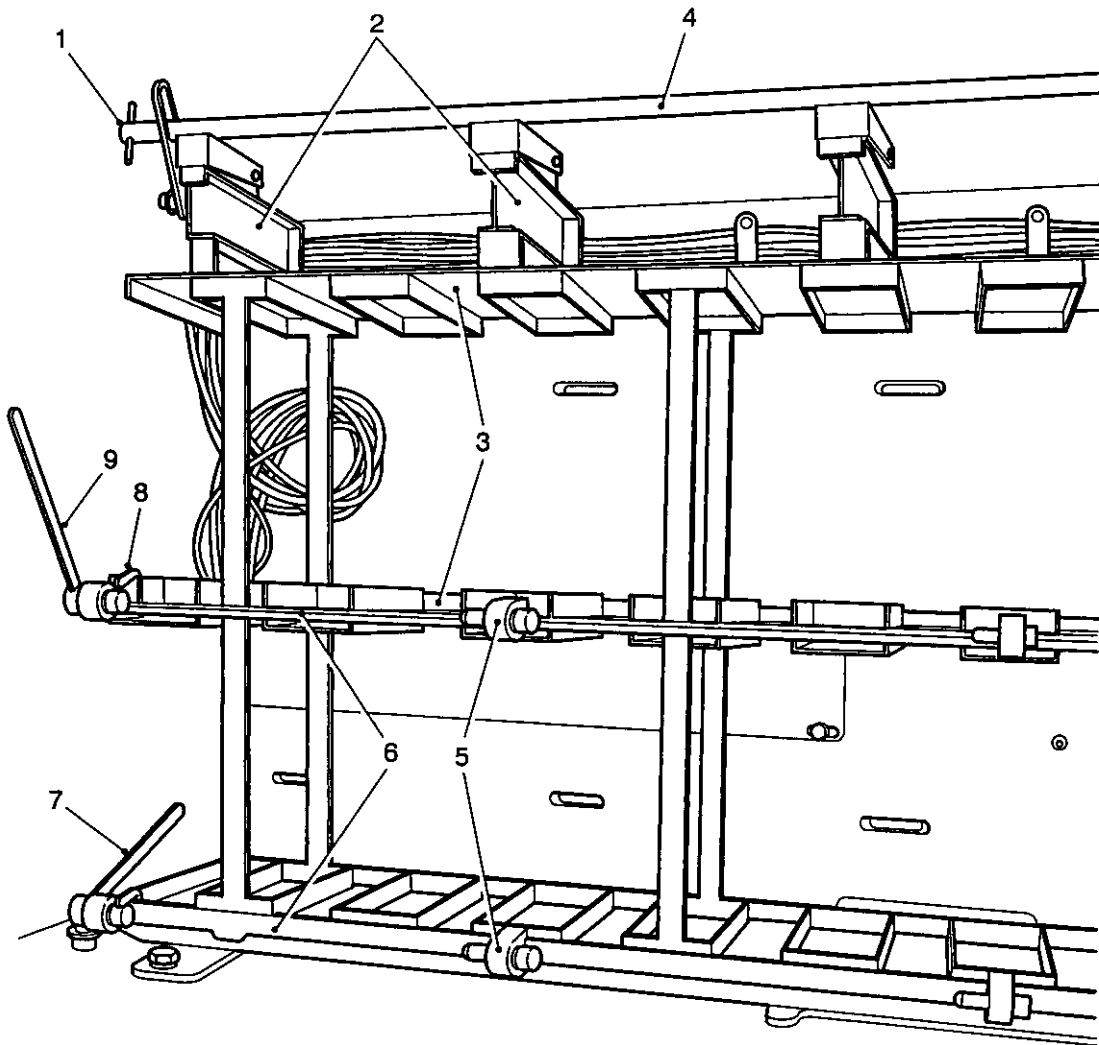
Bomb rack on left hand pannier

20 Fit a bomb rack (Fig 5 (3)) on the LH pannier, as follows:

- 20.1 Secure the rack support (1) to the pannier plate.
- 20.2 Secure the adaptor plates (2) to the LH upper sidewall.

20.3 Place the bomb rack assembly into position and secure to the pannier plate, using spacers between the pannier and the rack as required.

20.4 Fit the tie-bars between bomb rack and adaptor plates.



432/403

- | | | | |
|---|---|---|----------------------------|
| 1 | Rack support | 5 | Bearing blocks |
| 2 | Adaptor plate (a second plate is fitted towards front of vehicle) | 6 | Container retaining plates |
| 3 | Bomb rack | 7 | Locking handle (locked) |
| 4 | Locking bar | 8 | Locking pawl |
| | | 9 | Locking handle (open) |

Fig 5 Bomb rack fitted to left hand pannier

Weapons mounting plate

21 Fit the weapons mounting plate (Fig 9 (1)) as follows:

21.1 Fit weapons mounting plate to LH lower side plate.

Mortar mount

22 Fit the mortar mount as follows:

WARNING

PERSONAL INJURY. THE MORTAR MOUNT WEIGHS 67.3 KG (148 LB). WHEN FITTING OR REMOVING SUITABLE LIFTING SLINGS AND EQUIPMENT MUST BE USED.

NOTE

Pack or store the mortar mount on wooden skids, this will preserve the mounting cones when preparing to sling from the crane.

22.1 Clean vehicle floor and ensure that the twelve 3/4in. UNC tapped mount fixing holes (Fig 2 (1)) are free of debris.

22.2 Identify front and rear of mortar mount (Fig 6 refers).

NOTE

The rear of the base is square and the front is angled on LH and RH side.

22.3 Traverse the mortar mount to align the mortar-heading index to the datum mark on the mount (i.e. the vehicle heading index).

22.4 Fold the elevating arm down and secure with the existing strap (3).

22.5 Attach lifting chains (Table 1, Ser 1 and 2) to the mount with longer chains to the rear.

22.6 Sling mortar mount from suitable lifting equipment, ensuring that the chain slings do not foul any part of the mortar mount.

CAUTION

EQUIPMENT DAMAGE. Ensure the resilient type mat fitted to the mortar mount base is not damaged as the mount takes up its lifting position.

22.7 Lift the mortar mount above vehicle and lower it carefully through the mortar hatch, the rear of the mortar mount entering the rear of the mortar hatch first, moving it as far as possible to the rear of the vehicle.

22.8 Position the mortar mounting over the rear mortar mount securing bolt holes, identified at Sub Para 20.1, then lower it to the floor.

22.9 Fit the twelve 3/4in. UNC mortar mount securing bolts, remove the lifting chains and tighten the twelve bolts to the torque detailed in AESP 2350-T-251-601.

Setting up mortar mount and commander's cross level bubble/tilt indicator

23 Setting up the mortar mount and the commander's cross level bubble/tilt indicator is an armament function.



REDACTED

Fig 6 Mortar mount

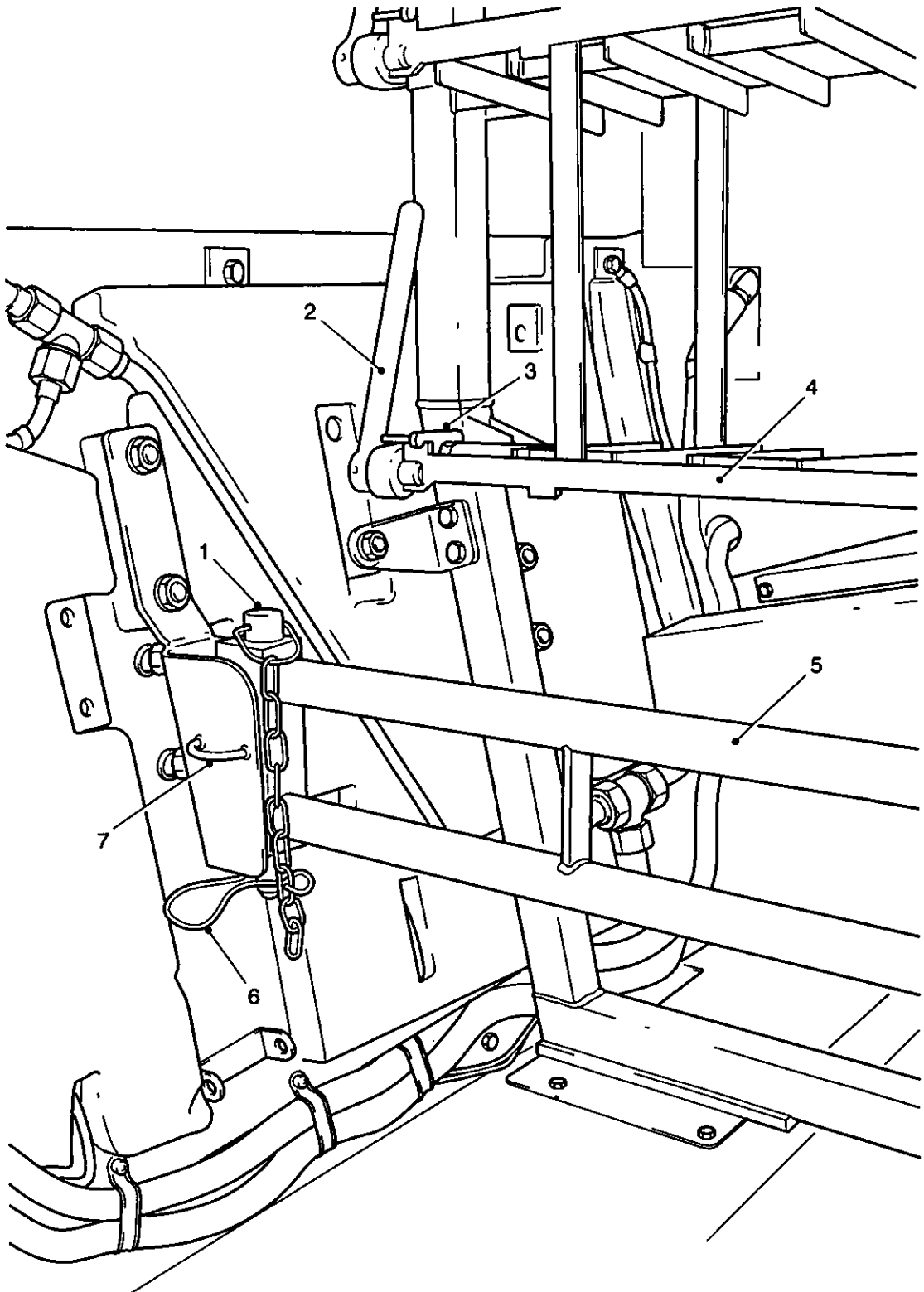


Transverse rail

24 Fit the transverse rail (Fig 7 (3)), as follows:

24.1 Fit the transverse rail brackets (4) to the LH and RH lower side plates (the LH side is similar but opposite to the illustration).

24.2 Fit the transverse rail between the brackets.



432/407

- 1 Side bracket
- 2 Rear bomb rack

- 3 Transverse rail
- 4 Transverse rail brackets

Fig 7 Rear bomb rack and transverse rail right hand side

Rear bomb rack

25 Fit the rear bomb rack (Fig 7 (2)), as follows:

25.1 Position the rack in the vehicle and secure to the lower side plate of the vehicle through the side brackets (1) into the existing tapped holes.

25.2 Secure the rack to the roof plate of the vehicle using the LH and RH pillars and the centre bracket.

25.3 Secure the rack to the rear plate of the vehicle using the LH and RH side stay brackets.

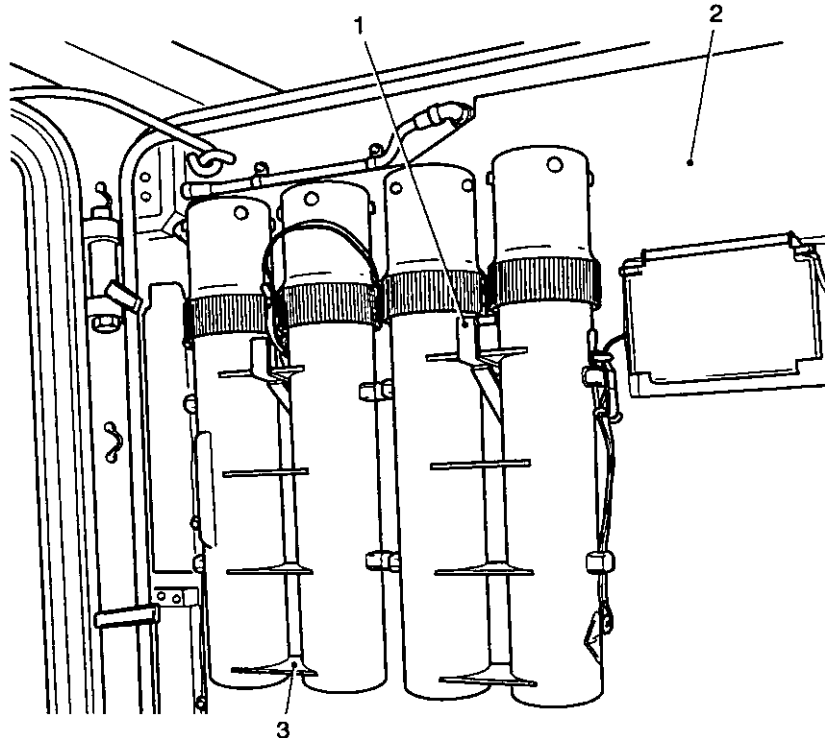
Rear door bomb rack

26 Fit the rear door bomb rack (Fig 8 (1)), as follows:

26.1 Secure the rear door bomb rack to the rear door (2) using the existing tapped bosses.

NOTE

This bomb door rack can only be accessed when the rear door is open.



432/138

1 Bracket
2 Rear door

3 Bomb containers

Fig 8 Rear door bomb stowage

Inspection of completed installation

27 The layout of a completed installation is detailed in Fig 9 and is included for reference only, inspect as follows:

27.1 Ensure all racking is fitted securely.

27.2 Ensure that the hinges and gates of new bomb racks and all mortar mounting mechanisms function correctly and are fully serviced, AESP 2350-T-251-522 refers.

CONDITIONS OF RELEASE

- 1 This information is released by the UK Government for defence purposes only.
- 2 This information must be afforded the same degree of protection as that afforded thereto by the UK Government.
- 3 This information may be disclosed only within the Defence Department of the recipient Government, except as otherwise authorized by the Ministry of Defence (Army).
- 4 This information may be subject to privately owned rights.

THIS DOCUMENT IS THE PROPERTY OF HER BRITANNIC MAJESTY'S GOVERNMENT, and issued for the information of such persons only as need to know its contents in the course of their official duties. Any person finding this document should hand it in to a British forces unit or to a police station for its safe return to the MINISTRY OF DEFENCE, D MOD Sy, LONDON, SW1A 2HB, with particulars of how and where found. THE UNAUTHORIZED RETENTION OR DESTRUCTION OF THE DOCUMENT IS AN OFFENCE UNDER THE OFFICIAL SECRETS ACTS OF 1911-1989. (When released to persons outside Government service, this document is issued on a personal basis and the recipient to whom it is entrusted in confidence, within the provisions of the Official Secrets Acts 1911-1989, is personally responsible for its safe custody and for seeing that its contents are disclosed only to authorized persons).

AMENDMENT INSTRUCTION

**CARRIER PERSONNEL, FULL
TRACKED, FV432 MK 2 & 2/1 (BOWMAN)**

INSTALLATION INSTRUCTION NO. 3

CANCELLATION

**SUBJECT: CONVERSION OF CARRIER PERSONNEL, FULL TRACKED FV432 MK 2 & 2/1 TO
COMMAND POST ROLE**

INTRODUCTION

- 1 As a result of the introduction of the BOWMAN system This Installation Instruction No. 3 is hereby cancelled.

ACTION

- 2 File this Page 1/2 in place of Inst Instr No. 3 dated May 04, all pages of which are to be destroyed.

CARRIER PERSONNEL FULL TRACKED FV432 MK 2 AND 2/1

INSTALLATION INSTRUCTION No 4

AMENDMENT RECORD

Amdt No.	Incorporated By (Signature)	Date	Amdt No.	Incorporated By (Signature)	Date
1			4		
2			5		
3			6		

SUBJECT: INSTALLATION OF PORTABLE SHELTER TO CARRIER PERSONNEL, FULL TRACKED FV432 MK 2 & 2/1

INTRODUCTION

1 This instruction details the procedures for the installation of a portable shelter to the vehicle. The portable shelter kit consists of equipment to form a penthouse for Command purposes only, and provides stowage facilities to carry the shelter equipment on the vehicle.

NOTE

- (1) Unless stated, the equipment is common to all marks of FV432, so where illustrations depict the equipment fitted to a mark of vehicle that is not relevant, the background can be ignored.
- (2) The fitting of this installation kit does not change the overall width of vehicles.
- (3) If AESP 2350-T-251-412 Inst Instr No 1 has been fitted to the vehicle, the rear and side tool bins must be removed before this instruction can be implemented.
- (4) Details for erecting the shelter can be found in AESP 2350-T-251-201.

APPLICABILITY

2 The information in this instruction applies to all variants of the FV432 MK 2 & 2/1 only.

ASSOCIATED PUBLICATIONS

3 The associated publications are as follows:

<u>Reference:</u>	<u>Title</u>
AESP 2350-T-251-741	Complete Equipment Schedule, Carrier full Tracked, FV432 Series Armoured Personnel Carrier, Conversion Kit, Command Post (Chap 2-1-5)

MAN HOUR CONTENT

- 4 Estimated time required
 - 4.1 Estimated time for fitting 2 man-hours
 - 4.2 Estimated time for reversion 1 man-hours

INSTALLATION IMPLEMENTATION PLAN

5 This installation instruction is to be implemented by units authorised to undertake Level 2, 3 and 4 maintenance.

Action required by

6 Units instructed by GS (or) MoD Army, or having an equipment entitlement for variants in the penthouse role.

6.1 Demand conversion kit (Table 1, Ser 1) if necessary, and hand over to supporting REME workshop.

6.2 Enter details and installation instruction number in vehicle logbook.

7 REME units affected.

7.1 Carry out work as detailed in this instruction.

Equipment and stores**Stores required:**

8 Table 1 details the equipment required in order to carry out this instruction.

TABLE 1 EQUIPMENT REQUIRED

Item (1)	NSN/Part No. (2)	Designation (3)	Qty (4)
1	8340-99-809-6541	CONVERSION KIT, PENTHOUSE	1
	Consists of:		
2	8340-99-809-8791	Frame, Tent Steel	1
	Consists of:		
	(a) 8340-99-800-0040	Wall Member (1 ½" X 18SWG, 6ft 1 ¾" lg)	8
	(b) 8340-99-800-0041	Roof Member (1 ¼" X 18SWG, 9ft lg)	4
	(c) 8340-99-800-0042	Roof Member (1 ¼" X 18SWG, 3ft 10 ⅝" lg)	9
3	8340-99-800-0043	Shelter, Canvas	1
4	6230-99-800-0151	Light, Desk 24v, Adjustable	4
5	6240-12-140-4715	Lamp, Fluorescent, 8W, Miniature	1
6	8340-99-120-0236	Pin, Tent steel	30
7	4020-99-120-8166	Rope, Fibrous, Nylon	A/R
8	8340-99-808-2417	Bracket Assy, Stowage Steel	1
9	8340-99-808-2418	Bracket Assy, Stowage Steel	1
10	5340-99-809-9201	Strap Retaining, Steel	2
11	2590-99-809-9202	Bracket, Double Angle	1
12	5340-99-809-9203	Strap Retaining, Steel	2
13	8340-99-800-0044	Fastener, Shelter Canvas, Rubber	18
14	2590-99-809-9207	Bracket, Double Angle Steel	2
15	2590-99-809-9208	Bracket, Double Angle Steel	2
16	2590-99-809-9209	Bracket, Double Angle Steel	1
17	5340-99-809-9210	Clamp Retaining, Steel	4
18	2590-99-795-6882	Wiring Harness (3 connectors)	3

(continued)

TABLE 1 EQUIPMENT REQUIRED (continued)

Item (1)	NSN/Part No. (2)	Designation (3)	Qty (4)
19	2590-99-809-9211	Bracket, Stowage Steel	1
20	2590-99-821-9166	Wiring Harness (2 connectors)	1
21	2590-99-800-0148	Wiring Harness (2 connectors)	1
22	5310-99-941-9412	Nut, Plain Wing, UNF, Steel	5
23	5305-99-941-0524	Screw ($\frac{5}{16}$ " X $\frac{9}{8}$ ")	20
24	5310-99-944-0545	Washer, Spring $\frac{5}{16}$ "	24
25	5305-99-941-0525	Screw ($\frac{5}{16}$ " X $\frac{3}{4}$ ")	4

INSTALLATION PROCEDURE

To install the portable shelter

9 Fit the two roof member stowage brackets as indicated (Fig 1(1)) using brackets, screws and spring washers (Items 10, 23 & 24) to the LH side of the vehicle.

10 Fit the roof member stowage clamp bracket (Item 11, 23 & 24) as shown (Fig 1(3)).

11 Fit the double roof member stowage clamp bracket (Item 16, 23 & 24) as shown (Fig 1(6)).

12 Fit the two side member brackets and stowage clamps (Fig 1(7)) with the flat bases (Items 14, 17, 23 and 24) as shown.

13 Fit the two side member brackets and stowage clamps (Fig 1(8)) with the raised channel section bases (Items 15, 17, 23 and 24) as shown.

14

14.1 Mk 2 Vehicles. Fit the two side member stowage clamps (Fig 2(5)) for the tie members (Items 8, 9, 23 and 24) to the RH rear of the vehicle, as shown.

14.2 Mk 2/1 Vehicles. Fit the bracket (Item 19) to the plate extension on the RH, side and stop/tail light housing, then proceed as described in Para 14.1 (Items 24 and 25)

15 Place the cases containing the cover and lighting equipments in the personnel compartment or, when installed with the command role, stow the lights and harnesses behind the map-boards on the pannier and the folded cover with its ropes and pins on the floor behind the bench seat.

Roof Members

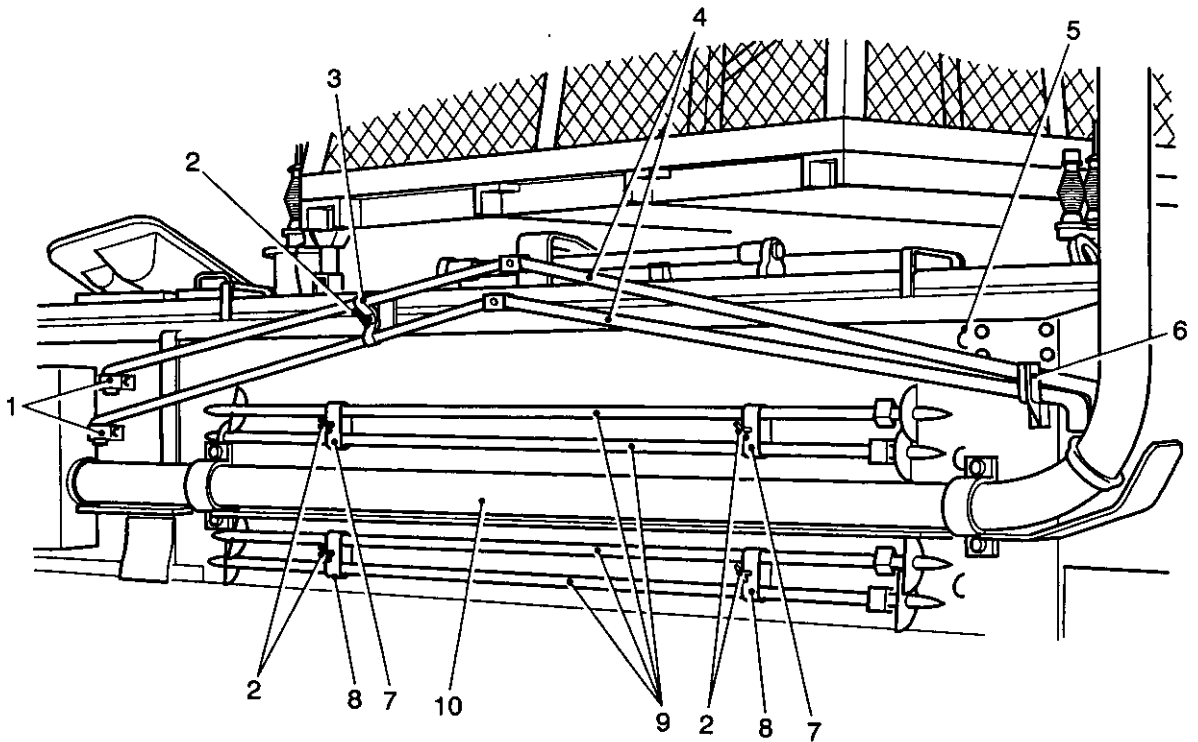
16 Unscrew the wing nuts (Item 22) on the roof member clamps (Fig 1 (3)) turn the clamp retaining plates aside and position the roof members (Items 2(b)), in pairs, with opposite ends together, then replace the clamp plates and tighten the wing nuts.

Side Members

17 Release the clamp bracket and turn the clamp plate (Fig 1 (7)) $\frac{1}{4}$ of a turn. Position the wall members (Items 2a) in pairs in the brackets (7) then replace the clamp plate and tighten the wing nut.

Tie Members

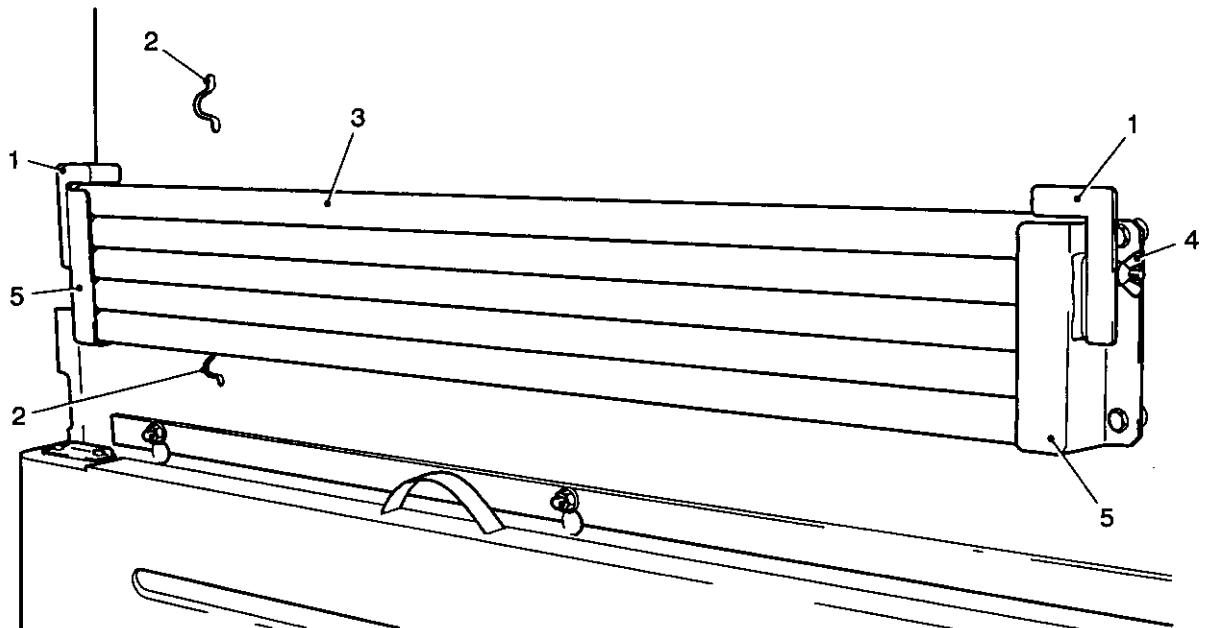
18 Release the wing nut (Fig 2(4)) on each of the brackets (5) and turn the retaining arms aside. Position the tie members (Items 2(c)) (Fig 2(3)) in the brackets, and replace the retaining arms and tighten the wing nuts.



430/40003

- | | | | |
|---|--|----|-----------------------------|
| 1 | Storage Bracket | 6 | Double bracket |
| 2 | Wing nut | 7 | Bracket and Clamp retaining |
| 3 | Bracket and Clamp, retaining roof member | 8 | Bracket and Clamp retaining |
| 4 | Roof member | 9 | Side members |
| 5 | Staple | 10 | Exhaust pipe |

Fig 1 Roof and side members storage



432/115

- | | | | |
|---|---------------|---|-----------|
| 1 | Retaining arm | 4 | Wing nuts |
| 2 | Staple | 5 | Bracket |
| 3 | Tie members | | |

Fig 2 Tie member's stowage

CARRIER PERSONNEL FULL TRACKED FV432 MK 2 AND 2/1

INSTALLATION INSTRUCTION No 5

AMENDMENT RECORD

Amdt No.	Incorporated By (Signature)	Date
1		
2		
3		

Amdt No.	Incorporated By (Signature)	Date
4		
5		
6		

SUBJECT: INSTALLATION OF INTERNAL STOWAGE TO CARRIER PERSONNEL, FULL TRACKED FV432 MK 2 & 2/1

INTRODUCTION

1 This instruction details the procedures for the fitting of stowage equipment allowing supplementary stowage facilities when the vehicle is to be used in the basic carrier role. The kit comprises pannier sill and under-seat wire mesh grilles, a weapon rack and a platform on which the cooking vessels can be stowed and operated.

NOTE

Unless stated, the equipment is common to all marks of FV432, so where illustrations depict the equipment fitted to a mark of vehicle that is not relevant, the background can be ignored.

APPLICABILITY

2 The information in this instruction applies to FV432 only.

ASSOCIATED PUBLICATIONS

3 The associated publications are as follows:

<u>Reference:</u>	<u>Title</u>
AESP 2350-T-251-741	Complete Equipment Schedule, Carrier full Tracked, FV432 Series, Armoured Personnel Carrier, Conversion Kit, Command Post (Chap 2-1-1)

MAN HOUR CONTENT

4 Estimated time required

- 4.1 Estimated time for fitting 3 man-hours
- 4.2 Estimated time for reversion 1.5 man-hours

INSTALLATION IMPLEMENTATION PLAN

5 This installation instruction is to be implemented by units authorised to undertake Level 2, 3 and 4 maintenance.

Action required by**6 Units instructed by GS (or) MoD Army, or having an equipment entitlement for the carrier role.**

6.1 Demand conversion kit (Table 1, Ser 1) if necessary, and hand over to supporting REME workshop.

6.2 Enter details and installation instruction number in vehicle logbook.

7 REME units affected.

7.1 Carry out work as detailed in this instruction.

Equipment and stores**8 Equipment required**

9 Table 1 details the equipment required in order to carry out this instruction.

TABLE 1 EQUIPMENT REQUIRED

Serial (1)	NSN/Part No. (2)	Designation (3)	Qty (4)
1	2540-99-813-4188	INSTALLATION KIT, INTERNAL STOWAGE	1

FV 651018

INSTALLATION PROCEDURE**NOTE**

It is advisable that the securing nuts and bolts of individual items are not fully tightened until the whole of each assembly is installed. This allows slight positional adjustments to be made in order to align the fixing holes.

10 Request REME assistance to install the cooking vessel harness (Fig 2(1)), connector socket bracket (10) and the cable clips.

11 Remove from the power pack compartment bulkhead, the literature holder and the literature holder bracket.

12 Secure the weapon rack (Fig 1(3)) to the power pack compartment bulkhead (1/4 in. X 1 in. bolts, plain and spring washers (4 off)).

13 Attach the pannier grille angle bracket supports (1) to the roof bosses (1/2 in. X 3/4 in. screws, plain and spring washers (6 off)).

14 Attach the angle brackets (2) to the supports. The left bracket is marked and the right bracket (3/8 in. x 1 in. bolts, nuts, plain and spring washers (6 off)).

15 Attach the pannier grille channels (5) to the hull lower side plates. The left channel projects 3 inches. (7.6 cm) beyond the forward end fixing lug (1/2 in. X 1 in. bolts, plain and spring washers (6 off)).

NOTE

Care must be taken not to crush the braided harness when fitting the right channel.

16 Lift the pannier grilles into position, placing the grille (11) with the relieved corner in the most forward position on the left side. Tighten the wing nuts.

17 Place the right (longest) under seat stowage grille (9) in position and attach the "L-shaped" brackets to the hull lower side plates, in line with the hooked struts (7) (1/4 in. X 3/4 in. bolts and spring washers (6 off)).

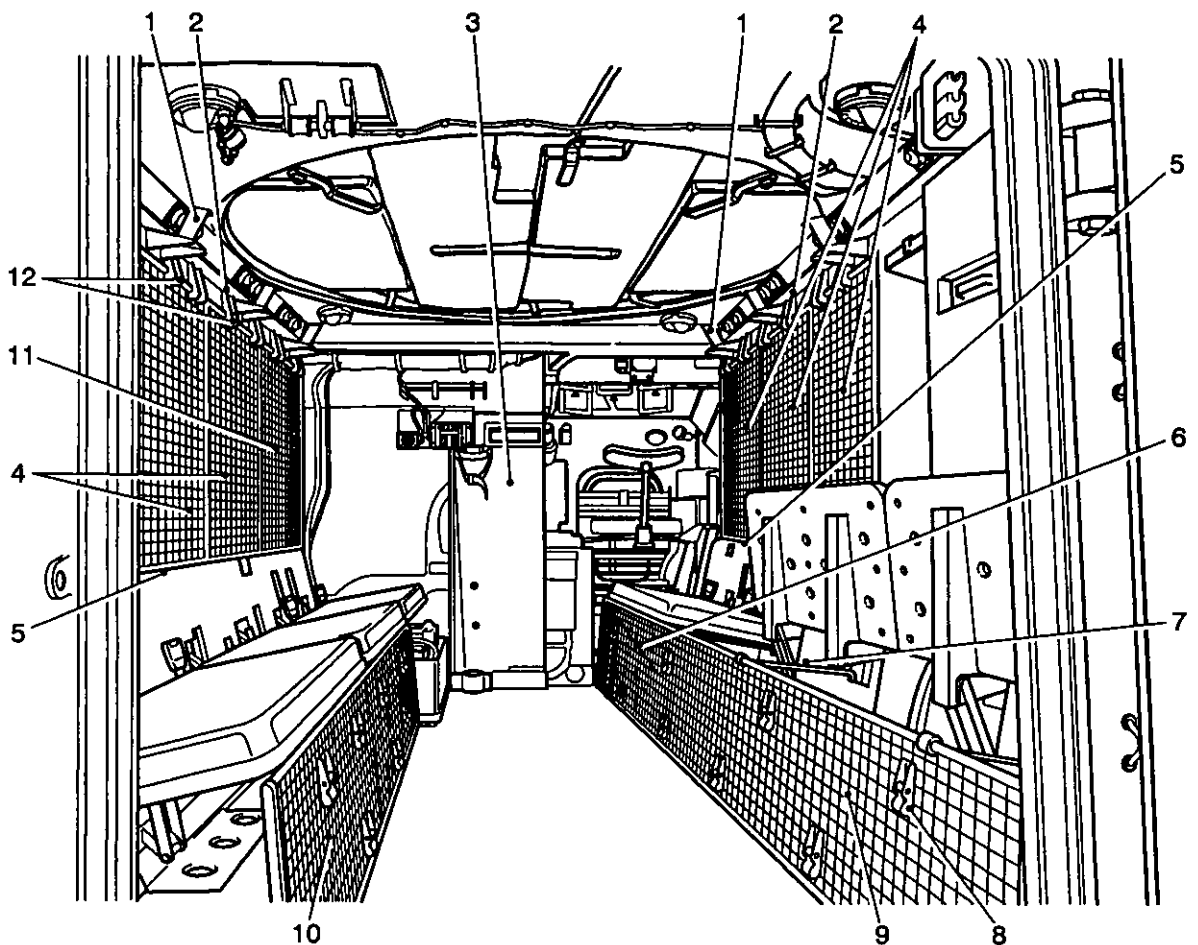
18 Engage the hooked struts in the 'L-shaped' brackets, and then secure the diagonal strut (6) to the floor, (3/8 in. X 5/8 in. screws and spring washers).

19 Place the left (shortest) under seat stowage grille (10) in position and attach the 'L-shaped' brackets to the hull lower side plate in line with the hooked struts (1/4 in. X 3/4 in. bolts and spring washers (6 off)).

20 Engage the hooked struts in the 'L-shaped' brackets, and then bolt the "T-shaped" bracket to the floor, approximately 10 inches (25.4 mm) from the vehicle rear plate (3/8 in. X 5/8 in. screw and spring washer (2 off)).

21 Remove the two upper screws securing the first aid box holder (Fig 2(7)) and discard them.

22 Attach the cooking vessel platform to the rear door with the lower screws passing through the first aid box holder (5/16 in. X 1 in. screws and spring washers (4 off)).

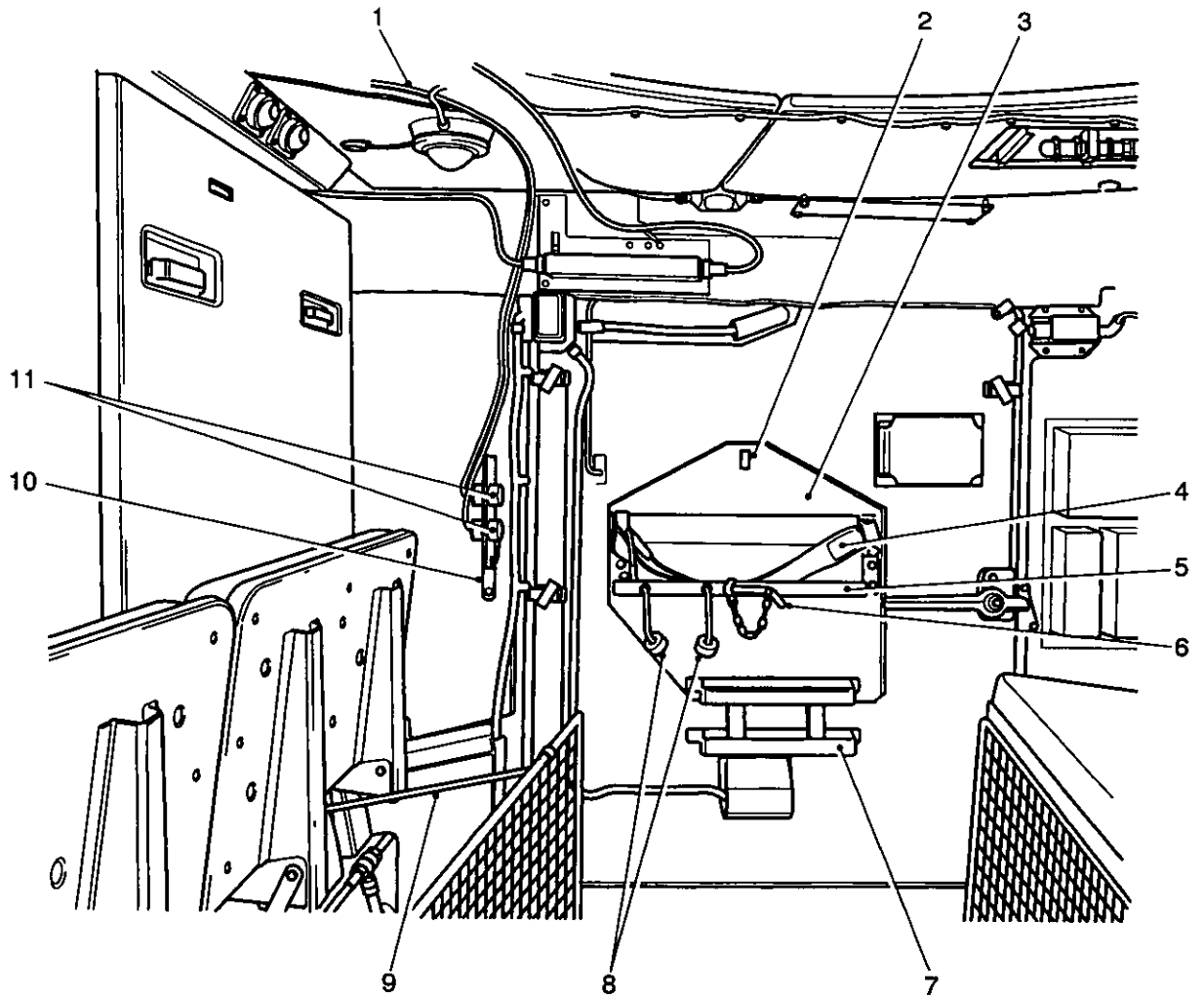


430/20150

- 1 Angle bracket support
- 2 Angle bracket
- 3 Weapon rack
- 4 Pannier grille
- 5 Channel
- 6 Diagonal strut

- 7 Hooked strut
- 8 Strap
- 9 Under-seat grille, right
- 10 Under-seat grille, left
- 11 Pannier grille
- 12 Wing nuts

Fig 1 Stowage grilles and weapon rack



430/20151

- | | | | |
|---|-----------------------|----|----------------------------|
| 1 | Cable harness | 7 | First aid box holder |
| 2 | Hasp | 8 | Cooking vessel socket caps |
| 3 | Back plate | 9 | Hooked strut |
| 4 | Vessel securing strap | 10 | Connector socket brackets |
| 5 | Shelf | 11 | Sockets |
| 6 | Drop-plate pin | | |

Fig 2 Cooking vessel platform

INSTALLATION INSTRUCTION No.6

AMENDMENT RECORD

Amdt No.	Incorporated By (Signature)	Date
1		
2		
3		

Amdt No.	Incorporated By (Signature)	Date
4		
5		
6		

SUBJECT: CONVERSION TO AMBULANCE ROLE

INTRODUCTION

1 This instruction details the procedures for the removal of internal equipment and the fitting of the Ambulance Conversion kit.

APPLICABILITY

2 Unless stated, the equipment is common to all marks of vehicle, so where the illustrations depict the equipment fitted to a mark of vehicle not relevant, the vehicle background should be ignored. Installation of the kit requires the removal of the ventilation batteries, but included in the kit are harnesses which, when installed, enable the ventilation fan to be connected to the radio battery circuit.

NOTE

Running the fan (and the heater, if fitted) with the engine stopped greatly reduces the time for which the radio station can be used on silent watch. When the engine is running, the radio distribution box battery switch must be turned 'ON' to connect the radio batteries to the charging circuit.

ASSOCIATED PUBLICATIONS

3 The associated publications are as follows:

<u>Reference:</u>	<u>Title</u>
AESP 2350-T-251-741	Complete Equipment Schedule, Carrier full Tracked, FV432 Series Armoured Personnel Carrier, Conversion Kit, Command Post (Chap 2-1-3)

MAN HOUR CONTENT

- 4 Estimated time required
 - 4.1 Estimated embodiment time 3 man-hours
 - 4.2 Estimated time for reversion 2 man-hours

INSTALLATION IMPLEMENTATION PLAN

5 This installation instruction is to be implemented by units authorised to undertake Level 2, 3 and 4 maintenance.

ASSOCIATED MODIFICATIONS

6 Users are to ensure that the following Modification Instructions are incorporated upon completion of this installation.

6.1 AESP 2530-T-250-811 Mod Instr No 1, EMER TV 107/2 Mod Instr No 88.
Title: Internal Stowage.

6.2 AESP 2530-T-250-811 Mod Instr No 1, EMER TV 107/2 Mod Instr No 105.
Title: Casualty harness – Fitting of cleats.

6.3 The vehicle communication equipment is reconfigured for the ambulance role. Refer to IETP (TBA) Bowman radio publications.

Action required by

7 Units instructed by GS (or) MoD Army, or having an equipment entitlement for 81mm mortar role.

7.1 Demand conversion kit (Table 1, Ser 1) if necessary, and hand over to supporting REME workshop.

7.2 Enter details and installation instruction number in vehicle logbook.

8 REME units affected.

8.1 Carry out work as detailed in this instruction.

Equipment and stores

9 Equipment required

10 Table 1 details the equipment required in order to carry out this instruction

TABLE 1 EQUIPMENT REQUIRED

Serial (1)	NSN/Part No. (2)	Designation (3)	Qty (4)
1	2540-99-866-3140	CONVERSION KIT, AMBULANCE	1

FV 462701

Storage

11 Redundant items, identified by part number and vehicle number, returned by REME after embodiment of ambulance role must be kept in safe custody, as they will be required for re-installation when vehicle is to be converted to other roles.

INSTALLATION PROCEDURE**To convert the vehicle to the ambulance role**

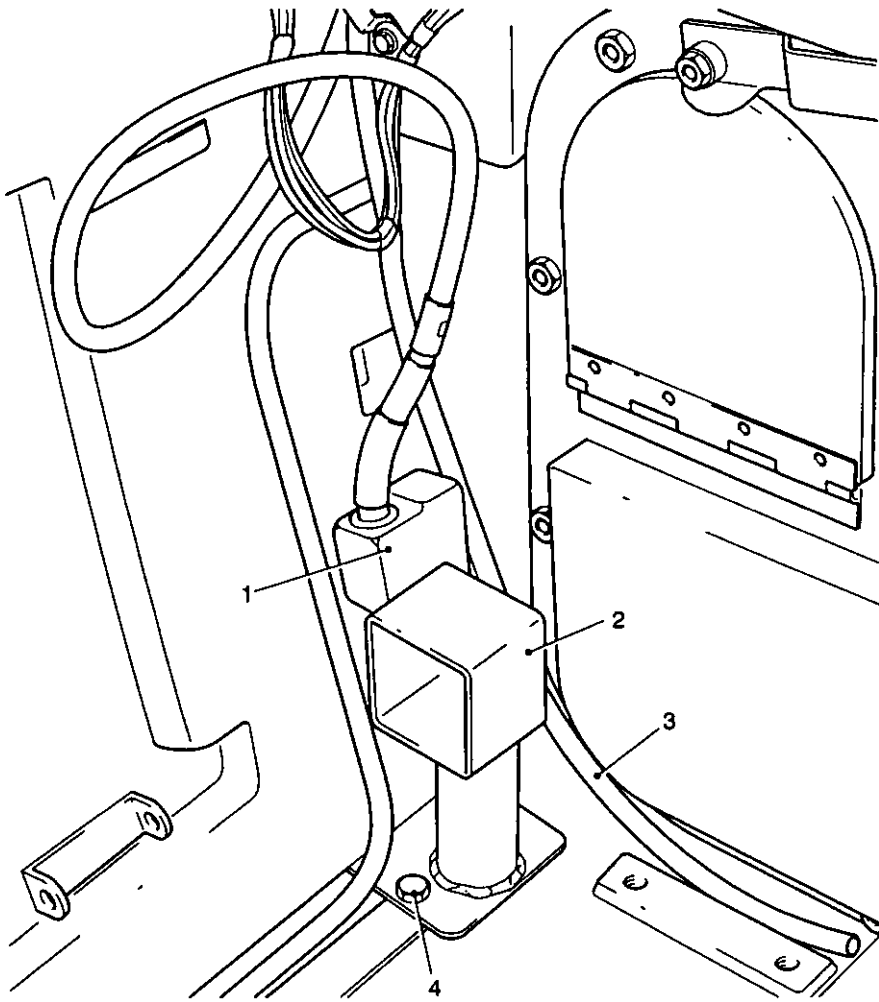
12 Remove the personnel seats, seat brackets, and links to suit the two or four stretcher role required.

13 Check that all battery and accessories switches are OFF.

14 Disconnect and remove the negative connection cable from the ventilation battery.

15 Slacken the two nuts securing the battery clamp bar and remove the bar.

- 16 Lift the rubber cover from the positive terminal to obtain access to the connector and disconnect. Similarly, disconnect the battery inter-connector from one of the terminals.
- 17 Withdraw the flexible vent tube connections from the batteries and lay the tube aside.
- 18 Remove the batteries and the container.
- 19 Unscrew the eight bolts securing the container housing and remove the housing.
- 20 Stow the positive connector (Fig 1(1)) on the insulated terminal on the vehicle side plate and the vent tube (3) in the existing cable and vent clips.
- 21 Remove the hull side plate to the left of the ventilation battery position, the stowage brackets for the commander's spare periscope.
- 22 Slide the driver's seat rearwards to gain access to the radio batteries and disconnect the cable connection from the negative terminal.
 - 22.1 Release the captive screw and turn the 2 or 3 battery system indicator switch (Fig 2(5)) to the two-battery position. Engage the captive screw in the alternative position.
 - 22.2 Disconnect the cable socket from plug No. 15 (9) and strap the loose end to a convenient point.
 - 22.3 Connect plug No. 15 to radio distribution panel plug No. 8 (Fig 3(2)) using harness FV167677/5 routing the harness through the existing cable clips.
 - 22.4 Reconnect the negative cable to the radio battery terminal and restore the driver's seat to its former position.
- 23 Secure the pedestal brackets (Fig 1(2)) one each side, the offset towards their respective side-plate (Fig 4(2) and (3)) (3/8in. x 1/2in. bolts and spring washers (4 off)).
- 24 Screw the carrier frame stowage strap (Fig 6(2)) into the roof bosses, aligning the ring with the frames, and then tighten the locknuts.
- 25 Fit the carrier frame stowage straps (1) through the staples on the fuel tanks and secure (2 rivets each).
- 26 Bolt the hinge pin brackets with the carrier brackets in position, onto the hull side plate (1/2in. x 7/8in. bolts and spring washers (16 off)).
- 27 Secure the pivoted guide channels (Fig 5(1)) to the rear stretcher brackets (1/2in. self-locking nuts (2 off)).
- 28 Insert the runners in the guide channels.
- 29 Mount the carrier frames on the stretcher brackets and guide channels (1/2in. self-locking nut (2 off)).
- 30 Thread the floor stretcher securing straps (Fig 7(3)) through the floor plate attachments (Fig 4(1)) adjacent to the respective stretcher handles and fit the casualty restraining harnesses.

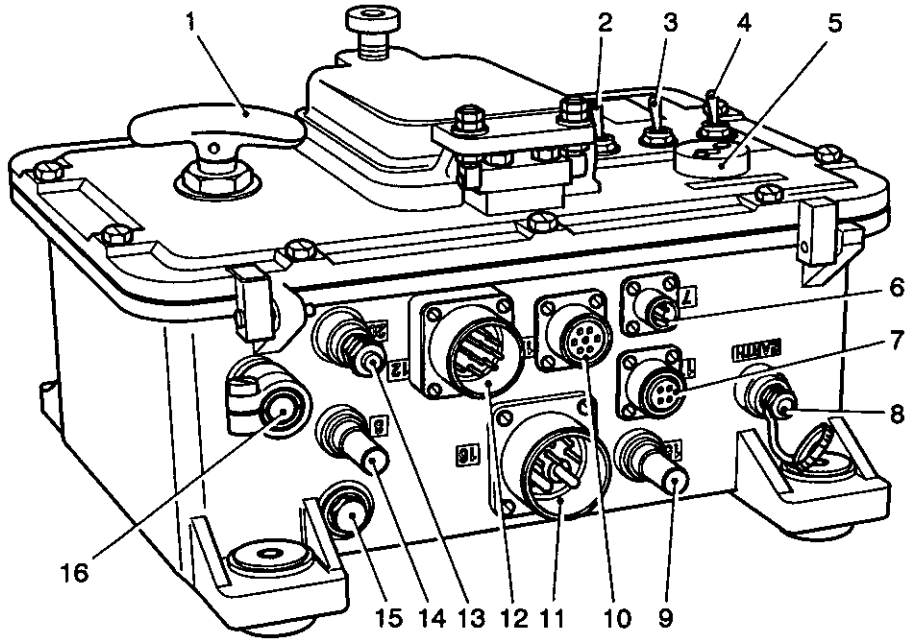


432/129

- 1 Positive cable connector
- 2 Pedestal bracket

- 3 Vent tube
- 4 Securing bolts

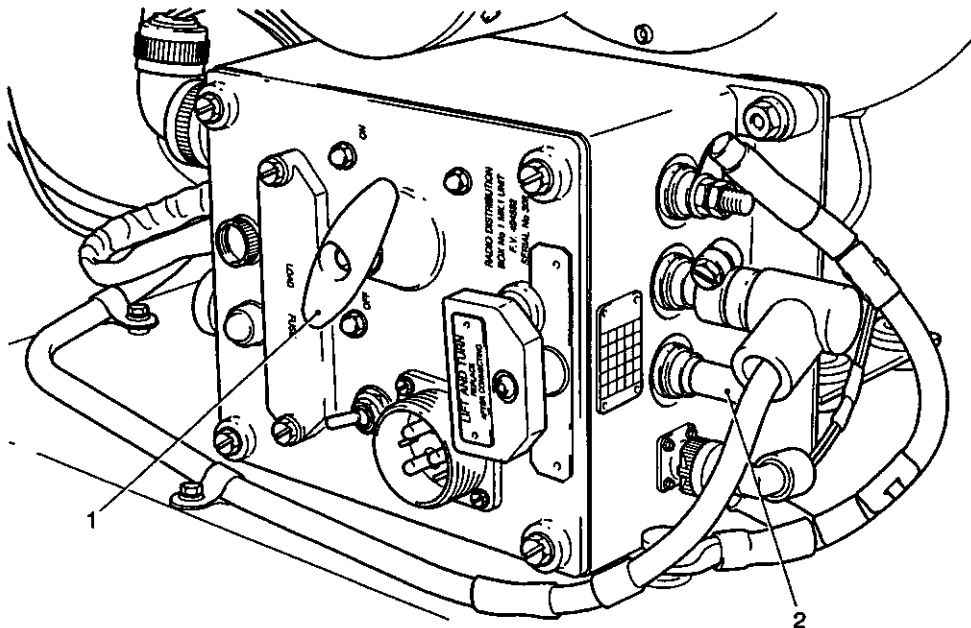
Fig 1 Pedestal bracket



432/425

- | | | | |
|---|---|----|--|
| 1 | Battery master switch | 10 | Socket-connection to fan controller |
| 2 | Fan switch | 11 | Plug - connection to fan motor |
| 3 | Heater switch | 12 | Plug - connection to distribution link box |
| 4 | External lighting switch | 13 | Insulated negative terminal |
| 5 | Batteries switch | 14 | Heavy-duty plug - connection to automotive batteries |
| 6 | Plug - connection to FIREWIRE | 15 | Waterproof test plug |
| 7 | Socket - connection to external lighting socket | 16 | Heavy duty socket - connection to distribution link box (Ambulance Role) |

Fig 2 Distribution panel No.6 Mk 1



432/426

- | | | | |
|---|----------------------|---|------------|
| 1 | Radio battery switch | 2 | Plug No. 8 |
|---|----------------------|---|------------|

Fig 3 Radio distribution panel

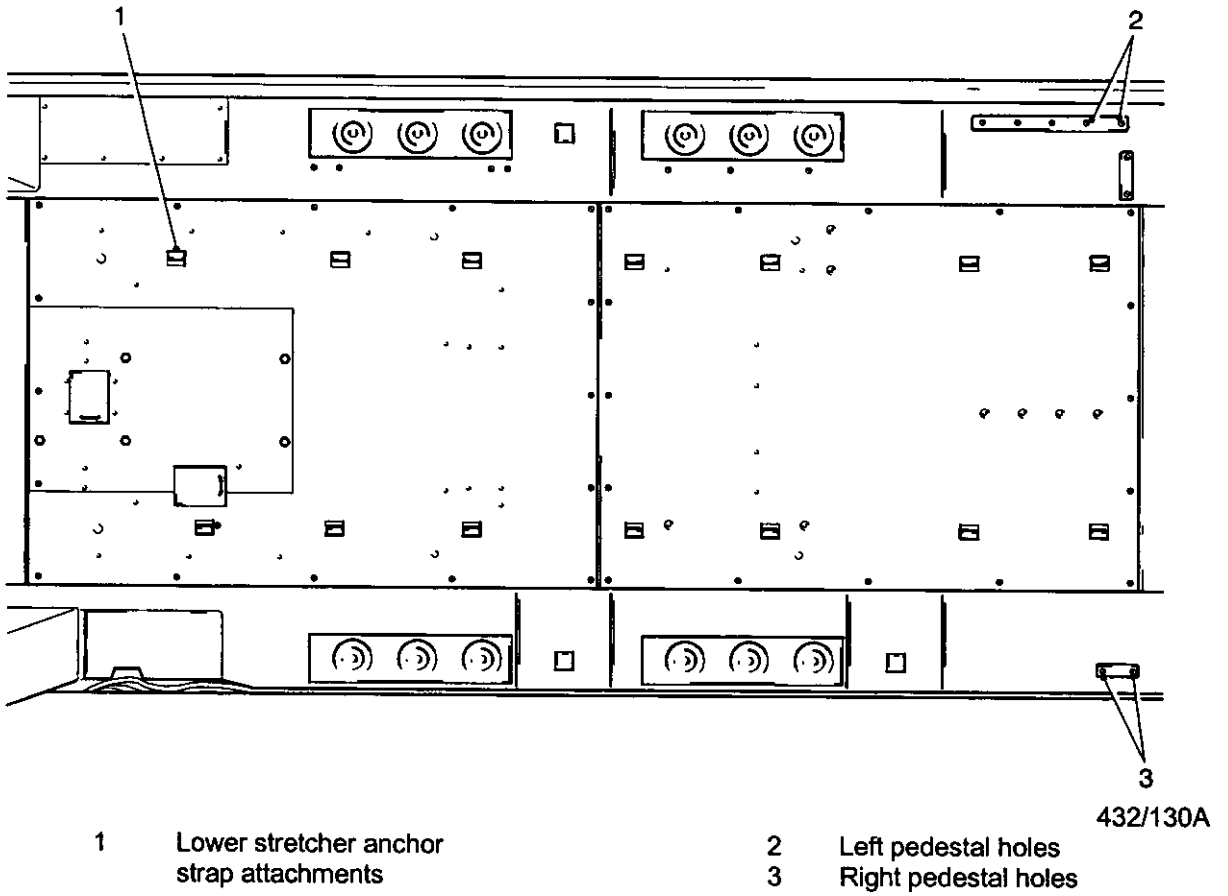


Fig 4 Floor plate

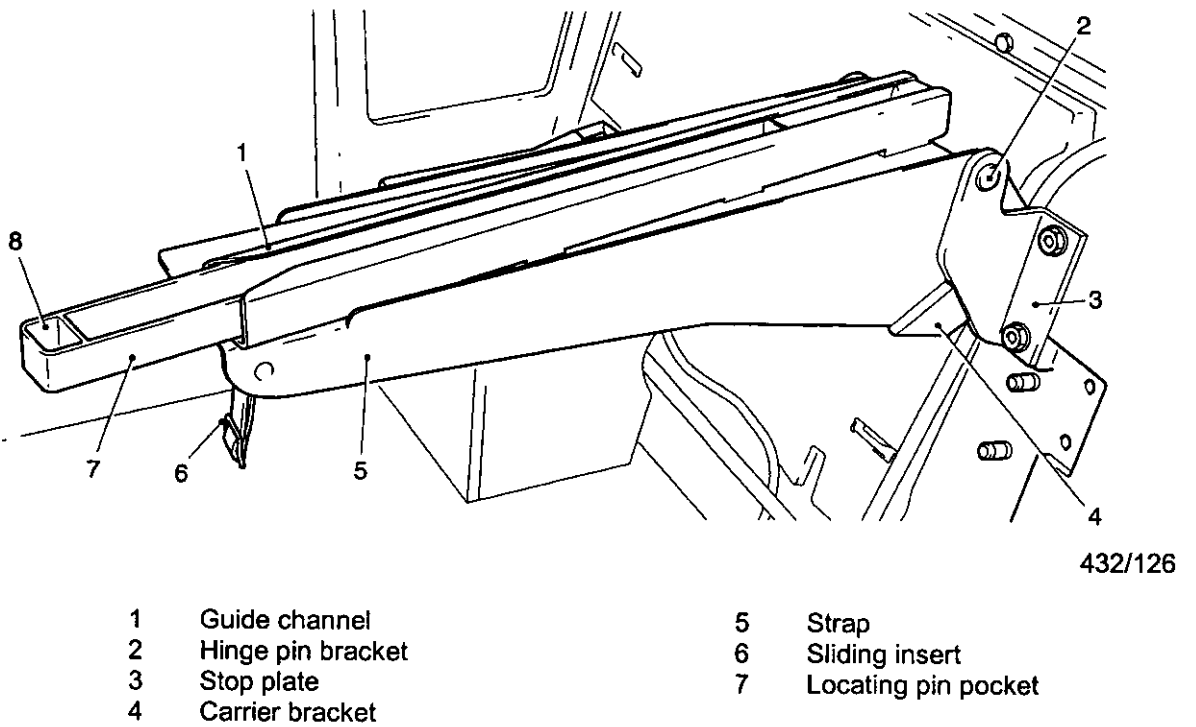
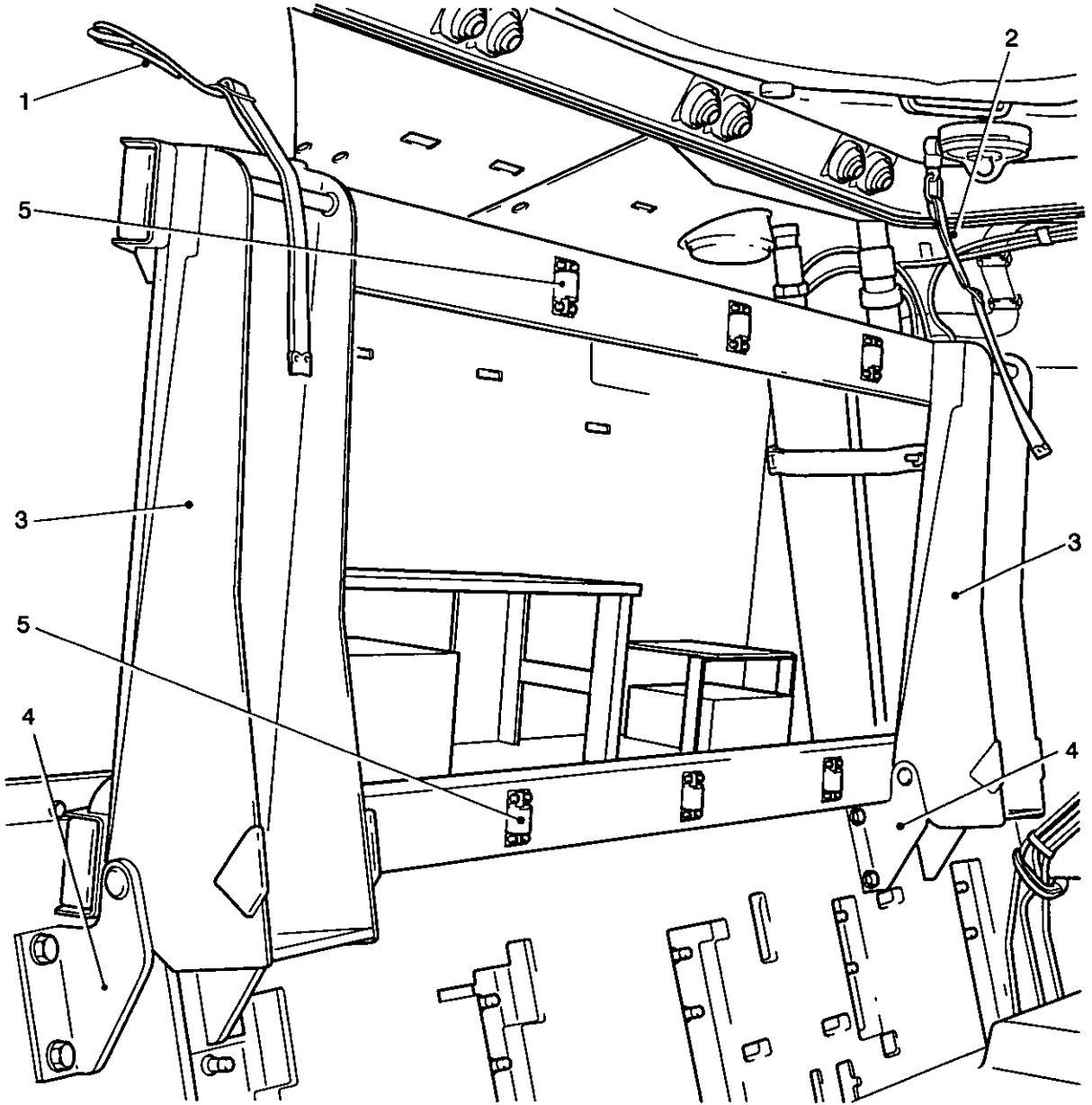


Fig 5 Carrier Bracket

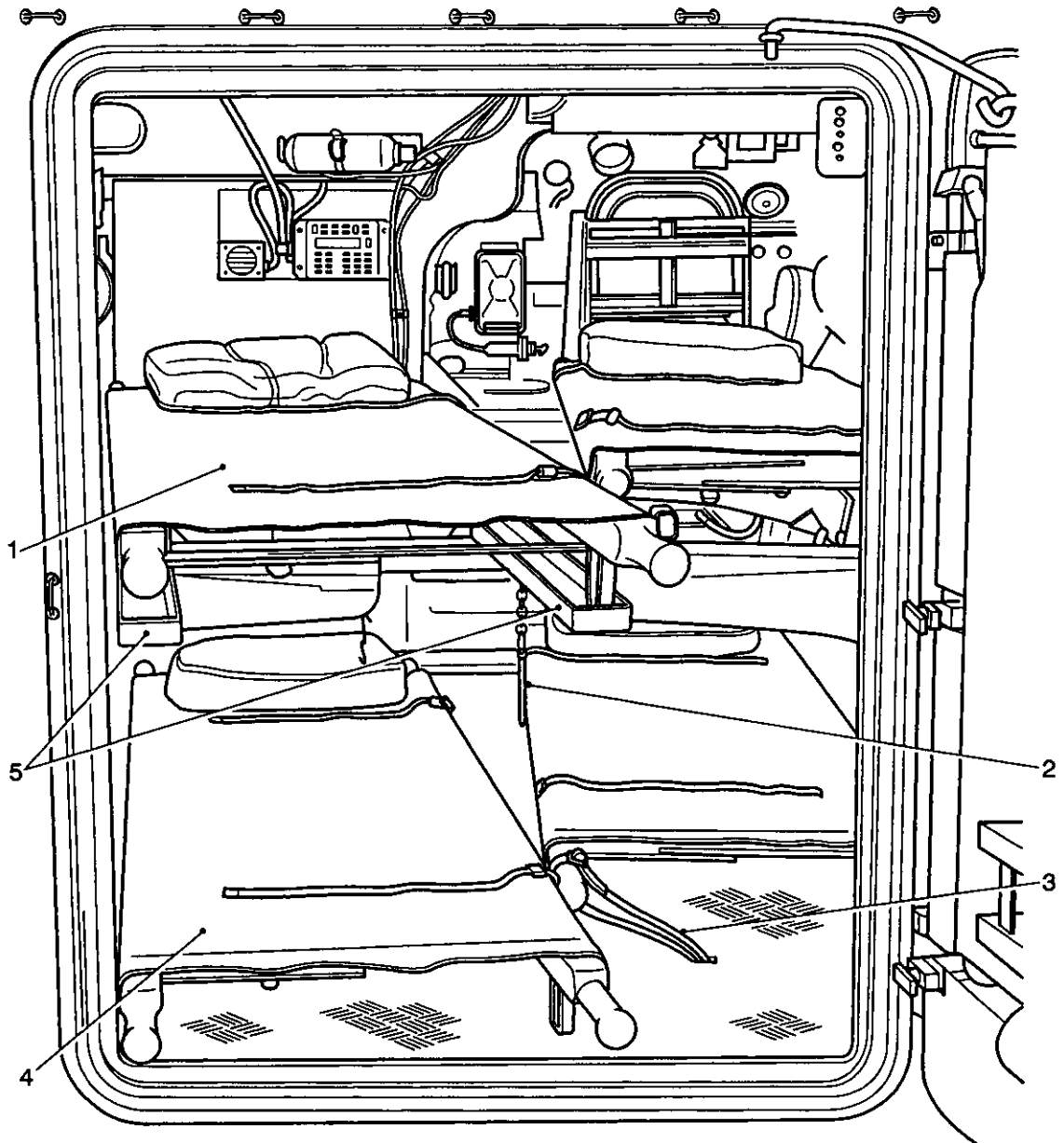


430/20148

- 1 Stowage strap from tank
- 2 Stowage strap from roof
- 3 Carrier bracket

- 4 Rollers
- 5 Hinge bracket

Fig 6 Carrier Frame, stowed



430/20146

- | | | | |
|---|-----------------|---|-----------------|
| 1 | Upper stretcher | 4 | Lower stretcher |
| 2 | Locking pin | 5 | Sliding inserts |
| 3 | Anchoring strap | | |

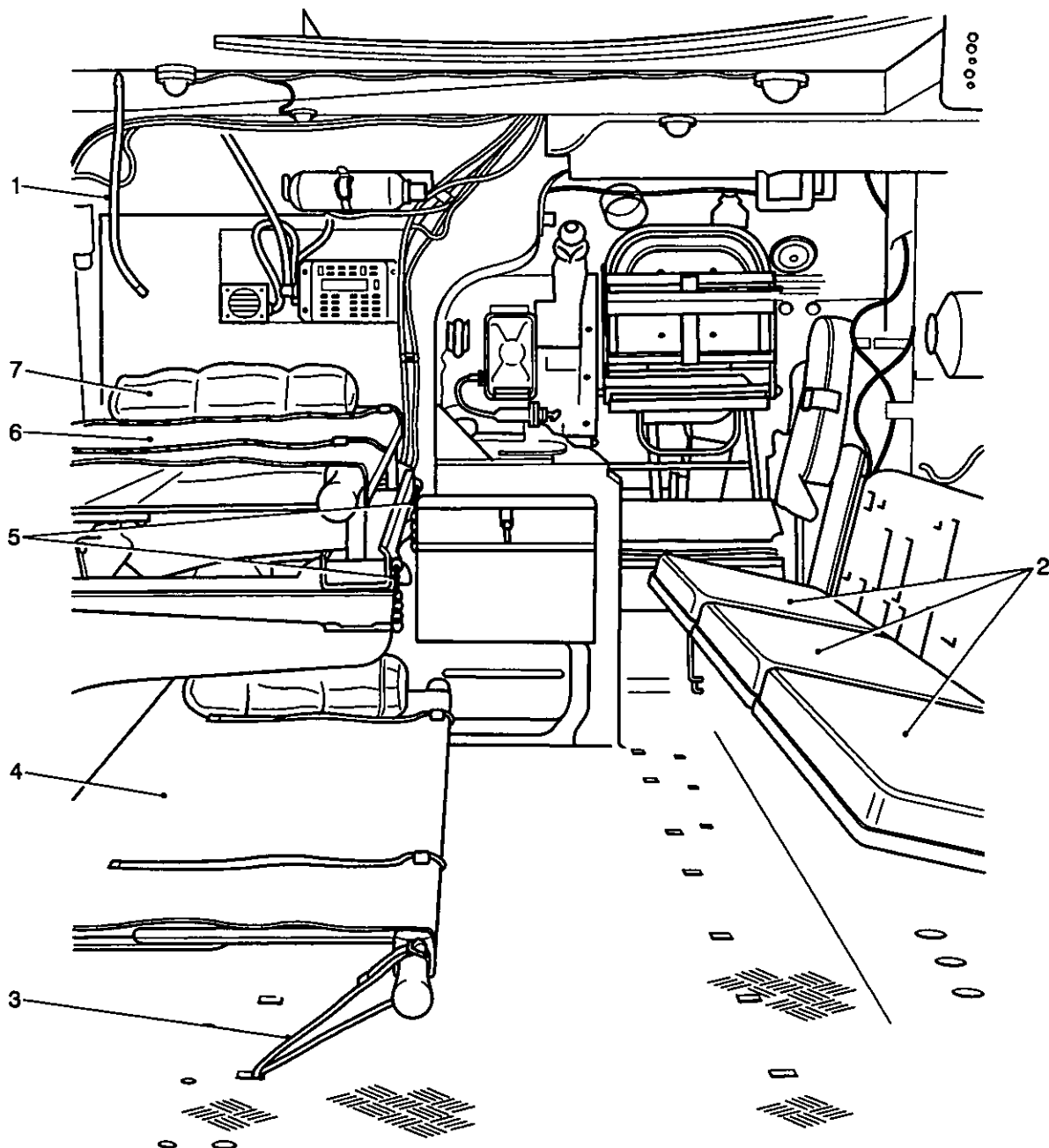
Fig 7 Stretchers in loading position

To convert the vehicle to two stretcher and seats ambulance role

31 To convert the vehicle to an ambulance, which provides stretcher and seating accommodation (Fig 8), the personnel seats (2) on the right side are retained and the equipment for two stretchers (4 and 6) installed on the left side.

32 The installation procedure is similar to that for the four-stretcher application except the retention of the right seats and the fitting of the left side stretcher equipment and the electrical kit only.

33 The installation of the stretchers on the left side will leave a clear passage between the rear door and the commander and driver's compartment.



430/20147

- | | | | |
|---|-----------------|---|--------------|
| 1 | Storage cleat | 5 | Locking pins |
| 2 | Personnel seats | 6 | Stretcher |
| 3 | Anchoring strap | 7 | Pillow |
| 4 | Stretcher | | |

Fig 8 Two stretcher application

~~UNRESTRICTED~~

~~UNRESTRICTED~~

CONDITIONS OF RELEASE

- 1 This information is released by the UK Government for defence purposes only.
- 2 This information must be afforded the same degree of protection as that afforded thereto by the UK Government.
- 3 This information may be disclosed only within the Defence Department of the recipient Government, except as otherwise authorized by the Ministry of Defence (Army).
- 4 This information may be subject to privately owned rights.

THIS DOCUMENT IS THE PROPERTY OF HER BRITANNIC MAJESTY'S GOVERNMENT, and issued for the information of such persons only as need to know its contents in the course of their official duties. Any person finding this document should hand it in to a British forces unit or to a police station for its safe return to the MINISTRY OF DEFENCE, D MOD Sy, LONDON, SW1A 2HB, with particulars of how and where found. THE UNAUTHORIZED RETENTION OR DESTRUCTION OF THE DOCUMENT IS AN OFFENCE UNDER THE OFFICIAL SECRETS ACTS OF 1911-1989. (When released to persons outside Government service, this document is issued on a personal basis and the recipient to whom it is entrusted in confidence, within the provisions of the Official Secrets Acts 1911-1989, is personally responsible for its safe custody and for seeing that its contents are disclosed only to authorized persons).

AMENDMENT INSTRUCTION

**CARRIER PERSONNEL, FULL
TRACKED, FV432 MK 2 & 2/1 (BOWMAN)**

INSTALLATION INSTRUCTION NO. 7

CANCELLATION

SUBJECT: MILAN STOWAGE INSTALLATION

INTRODUCTION

- 1 As a result that the MILAN stowage installation is no longer required, this Installation Instruction No. 7 is hereby cancelled.

ACTION

- 2 File this Page 1/2 in place of Inst Instr No. 7 dated May 04, all pages of which are to be destroyed.

UNRESTRICTED

UNRESTRICTED

CARRIER PERSONNEL FULL TRACKED FV432 MK 2 AND 2/1

INSTALLATION INSTRUCTION No.8

Sponsor
DG ES(L)

Publication Agency:
DLO Andover
Project No: S01008
File Ref:

AMENDMENT RECORD

Amdt No.	Incorporated By (Signature)	Date
1		
2		
3		

Amdt No.	Incorporated By (Signature)	Date
4		
5		
6		

SUBJECT: Installation of cooler for carriage of medical stores

(Approval No USUR LAND/03/TE/149)

INTRODUCTION

1 This instruction details the procedure for the fitting of coolers into the FB432 to allow refrigeration of medical stores.

1.1 Limitation on use of equipment. Nil

APPLICABILITY

2 The information in this instruction applies to all FV432 vehicles used in the medical support role.

MAN HOUR CONTENT

3 3.1 Estimated time for fitting: 1 man-hour.

3.2 Estimated time for reversion: 1 man-hours.

INSTALLATION IMPLEMENTATION PLAN

4 This installation instruction is to be implemented by units authorised to carry out Level 2, 3 and 4 maintenance.

ASSOCIATED MODIFICATIONS

Action required by

5

5.1 Units holding subject vehicles:

5.1.1 The stores listed at Table 1 will be automatically issued to specified units on the authority of Medical Branch HQ 1(UK) Armd Div.

5.1.2 Record installation details in the vehicle documents (AB413).

5.1.3 On receipt of stores request REME/workshop to embody this instruction kit.

5.2 Army units embodying this instruction:

5.2.1 When requested by the user to embody this installation, or remove this installation.

5.2.2 Units embodying/removing this installation are to enter completion/removal details in the vehicle documents (AB413).

5.3 All recipients of this instruction: Add particulars to AESP 2350-T-251-412.**Equipment, tools and stores****6**

6.1 Stores required are listed at Table 1.

TABLE 1 STORES TO BE ISSUED AUTOMATICALLY

Serial (1)	NSN/Part No. (2)	Designation (3)	Qty (4)	Remarks (5)
1		Cooler CF 50 c/w cable	1	Cable inside cooler
2	5340-99-127-9986	Strap webbing 30 in. lg.	4	Contained inside cooler
3	5340-99-838-1364	Tie nylon	10	Contained inside cooler

ASSOCIATED MODIFICATIONS

7 Nil.

INSTALLATION ILLUSTRATIONS

Fig

1 Cooler in position on RH sponson area

INSTALLATION PROCEDURE**Sequence of operations**

8 The procedure to install the cooler is as follows (see Fig 1).

8.1 Clear the RH sponson area between the fuel tank and the spotlight stowage of any loose items. Place the cooler onto the cleared sponson area ensuring that the controls and connections are towards the front of the vehicle. Ensure that the lid is fitted so that it is hinged fro the edge closest to the hull wall.

NOTE**SUBJECT: MILAN STOWAGE INSTALLATION**

The carrying handles have been removed from the outside of the coolbox to allow it to fit into the allotted space. The handles are to be found inside the coolbox. The handles are to be retained in a safe place, to be returned with the cooler when the installation is removed.

8.2 Using the cleats fitted to the hull wall and the sponson edge use the four webbing straps (Table 1 Item 2) secure the cooler in place. Do not over tighten the straps as damage to the cooler could occur.

- 8.3 Remove the ventilation battery lid and disconnect the batteries. Secure the coolbox cable end fittings to the to the battery lead terminal, ensuring the fused cable is attached to the positive lead.
- 8.4 Route the cable using existing cable routes and cable ties (Table 1 Item 3) ensuring that the cable will not be snagged or trapped by other equipment. Plug the end of the cable into the cooler.
- 8.5 Reconnect the ventilation battery leads and ensure that the cooler functions correctly using the operating instructions provided with the cooler.

RESTORATION PROCEDURE

- 9 When the cooler is to be removed proceed as follows:
- 9.1 Remove the ventilation battery lid and disconnect the batteries. Disconnect the power supply cable from the cooler and remove the cable from the ties that are securing it. Remove the coolbox cable end fittings from the battery terminals. Reconnect the battery leads and replace the battery cover.
- 9.2 Remove the webbing straps securing the cooler to the sponson area and remove the cooler.
- 9.3 Ensure that the cooler is clean and place the securing straps and power lead inside the cooler. Ensure that the carrying handles are in the coolbox. Backload as instructed.

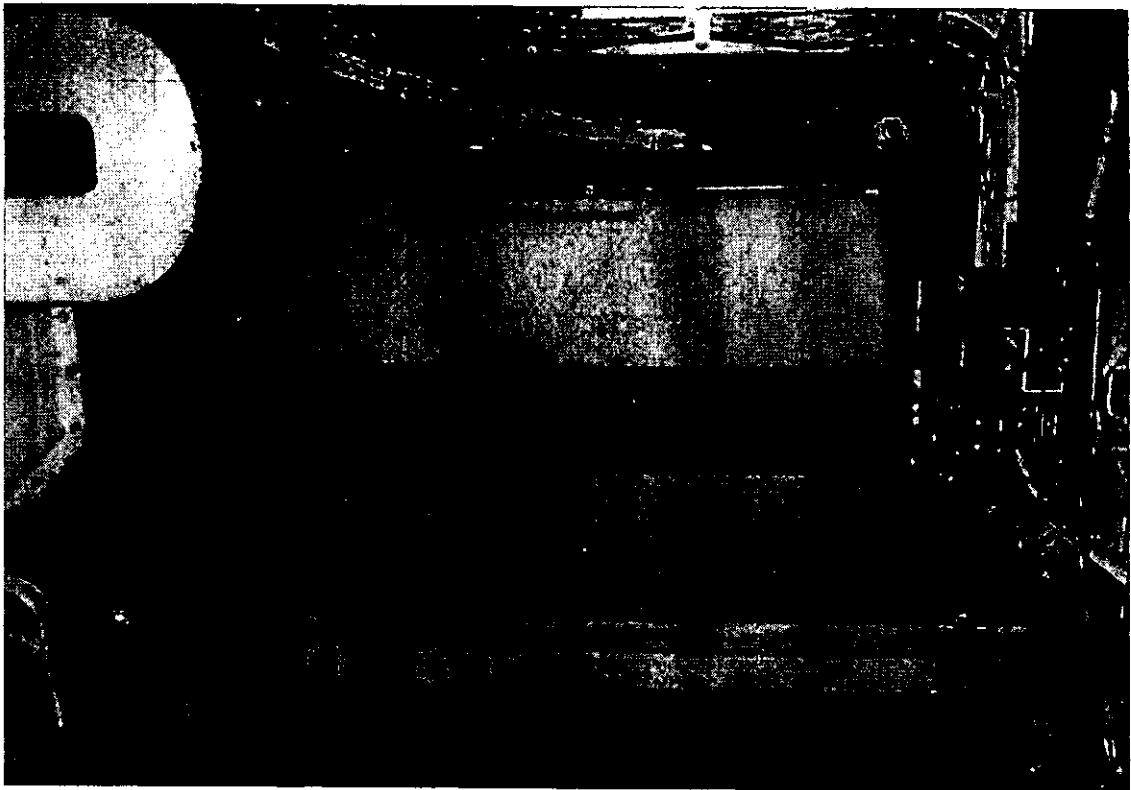


Fig 1 Cooler in position on the RH sponson area

UK RESTRICTED

UK RESTRICTED

CARRIER PERSONNEL FULL TRACKED FV432 MK 2 AND 2/1

**INSTALLATION INSTRUCTION No. 9
(Completely Revised)**

AMENDMENT RECORD

Amdt No.	Incorporated By (Signature)	Date
1		
2		
3		

Amdt No.	Incorporated By (Signature)	Date
4		
5		
6		

SUBJECT: GENERATOR MOUNTING AND TELESCOPIC MAST

Approval No. 43-2-0018/19/20/21

INTRODUCTION

1 The FV432 BATES is to be fitted with a generator hoist and generator mounting to aid lifting and security of the roof mounted generator. Vehicles earmarked for the Acoustic Sounding Platform (ASP) role, are to be fitted with an extra generator mounting and telescopic mast mounting.

2 This instruction details the procedures for the fitting of brackets to the hull so enabling the generator hoist, generator mount and telescopic mast to be fitted.

APPLICABILITY

1 The information in this instruction applies to FV432 (BATES) only, asset code 0060 3000.

ASSOCIATED PUBLICATIONS

2 The associated publications are as follows:

<u>Reference</u>	<u>Title</u>
AESP 0200-A-201-013	Welding, cutting and brazing
AESP 0200-A-221-013	Painting of service equipment
AESP 2350-T-251-811	Carrier Personnel Full Tracked FV432 MK2 and 2/1 Instr No 141
AESP 2350-T-251-412	Carrier Personnel Full Tracked FV436 MK2 and 2/1 Instr No. 1

INSTALLATION IMPLEMENTATION PLAN

4 This installation instruction is to be implemented by units authorised to undertake Level 2, 3 and 4 maintenance.

Action required by

5 Units holding subject vehicles.

5.1 Demand kit as detailed in Table 1 and hand over to supporting REME workshop.

5.2 Enter details and installation instruction number in vehicle logbook.

5.3 Hand vehicle over to supporting workshop, complete conversion.

6 REME units affected.

6.1 Carry out work as detailed in this instruction.

Man hour content7 Estimated time required

7.1 Embodiment 10 man-hours.

7.2 Reversion 6 man-hours.

Equipment tools and stores8 Stores required

9 Table 1 details the stores required in order to carry out this instruction.

TABLE 1 STORES REQUIRED

Item (1)	NSN/Part No. (2)	Designation (3)	Qty (4)
		HOIST MOUNTING (MAE 43/2/0021)	
1	3950-99-789-6169	Hoist mounting Installation Kit (comprising of)	1
2	2590-99-813-6841	Pad (rear hoist mounting)	1
3	2590-99-595-0686	Pad (forward hoist mounting)	1
4	2590-99-132-4293	Hoist pivot mounting bracket	1
5	2590-99-391-1860	Hoist support mounting bracket	1
6	2590-99-810-6215	Block pivot	1
7	2590-99-810-6216	Swivel assembly	1
8	5315-99-356-7623	Swivel pin assembly	1
9	5306-99-941-6347	Bolt hexagon head M12 x 30	7
10	5310-99-138-9229	Washer spring single coil M12	7
11	5310-99-122-6477	Washer flat M12	7
12	2530-99-616-7788	Bracket support assembly	1
13	2590-99-251-9574	AFV Hoist	1
14	5340-99-820-3318	Strap assembly	1
15	2590-99-840-0473	Sling assy kit	1
16	5305-99-122-5356	Screw HEX HD M5 X 16	1
17	5310-99-138-9226	Washer lock	1
18	5310-99-122-3032	Washer flat	1
19	5340-99-735-2962	Clip	1
		GENERATOR MOUNTING	
20	FV2072518	Pad (generator)	1
21	FV2072519	Pad (generator)	4
22	FV2200930	Generator stowage frame	1

(continued)

TABLE 1 STORES REQUIRED (continued)

Item (1)	NSN/Part No. (2)	Designation (3)	Qty (4)
23	5305-99-123-3388.	5/16 UNF Screw hexagon head x ¾ inch long	4
24	5310-99-956-1786	Washer plain 5/16 dia.	4
25	5310-99-941-6645	Washer spring single coil 5/16 inch	4
TELESCOPIC MAST STOWAGE			
26	FV2200944	Support pad (mast mounting)	4
27	FV2200941	Welded assembly of telescopic mast stowage frame	2
28	5306-99-941-6347	Bolt hexagon head M12 x 30	8
29	5310-99-138-9229	Washer spring single coil M12	8
30	5310-99-122-6477	Washer flat M12	8
31	716-300	Mast mounting bracket	6
32	5310-99-122-5297	Nut hexagon M10	12
33	5310-99-138-9228	Washer spring single coil M10	12
34	5310-99-122-6476	Washer flat M10	12
35	FV220956	Welded assembly of telescopic mast stowage frame right hand side	2
36	467-309	Mast mounting bracket	2
37	5310-99-122-5296	Nut hexagon M8	4
38	5310-99-138-9227	Washer spring single coil M8	4
39	5310-99-122-6475	Washer flat M8	4

10 Stores to be removed and reused

11 Table 2 details the stores to be removed and refitted at Para 15.

TABLE 2 STORES TO BE REMOVED AND REFITTED

Item (1)	NSN/Part No. (2)	Designation (3)	Qty (4)
1	1080-99-562-2567	Concealment bracket (Left hand centre)	1

Storage

12 Redundant items, identified by part number and vehicle number, returned by REME after embodiment of A.S.P. role must be kept in safe custody, as they will be required for re-installation when vehicle is to be converted to other roles.

ASSOCIATED INSTALLATION INSTRUCTION

13 Before implementing this instruction ensure that the following installation instruction has been fitted:

- 13.1 AESP 2350-T-251-412 Installation Instruction No. 1 (for FV432 Bates vehicles).
Title: Additional stowage bins.

INSTALLATION ILLUSTRATIONS

14

- Fig 1 Hull mountings required to fit roof mounted generator, hoist assembly and masts.
- Fig 2 Assembly of telescopic mast stowage frames.
- Fig 3 Assembly of additional generator frame required to fit roof mounted generator.
- Fig 4 Mounting brackets required to fit hoist assembly.

INSTALLATION PROCEDURE**Removal of concealment bracket****WARNING**

PERSONNEL INJURY. SERIOUS INJURY CAN OCCUR FROM METAL DEBRIS DURING ANGLE GRINDING OPERATIONS. APPROPRIATE CLOTHING AND EYE PROTECTION SHOULD BE WORN THROUGHOUT.

15 AESP 2350-T-251 811 Instr No 141 introduced array brackets to enable the vehicle outline to be interrupted when deployed in the field. Remove the centre left hand array bracket (Table 2, item 1) from the roof and retain.

Hoist Mounting**WARNINGS**

(1) PERSONNEL INJURY. SERIOUS INJURY CAN OCCUR FROM METAL DEBRIS AND WELD ARCING DURING THE PROCEDURES DETAILED IN THIS SEQUENCE OF OPERATIONS. APPROPRIATE CLOTHING AND EYE PROJECTION SHOULD BE WORN THROUGHOUT.

(2) PERSONNEL INJURY. LIVES COULD BE AT RISK, IF THE BALLISTIC INTEGRITY OF THE VEHICLE IS COMPROMISED. CARE SHOULD BE TAKEN TO ENSURE THE MINIMUM AMOUNT OF PARENT METAL IS REMOVED DURING THE MACHINING PROCESS.

16 Using the procedure detailed in AESP 0200-A-221-013, remove the paint finish from areas to be welded and degrease. Mark out the positions of the pads on the hull as detailed in Fig 1 (Table 1, items 2 & 3).

NOTE

Due to the location of the fuel tanks and the insulation fitted inside the hull, alternately skip weld the pads, to prevent excessive heat build up in the hull, until the relevant fillet welds have been completed.

17 Weld the pads (Fig 1) (Table 1, items 2 & 3) in position using the procedures detailed in AESP 0200-A-201-013.

18 Using the procedures detailed in AESP 0200-A-221-013 restore the vehicle paint finish in the area detailed in Para 17.

19 Fasten the hoist pivot mount (Table 1, item 4) to the vehicle with 5 off bolts, plain and spring washers (items 9 to 11).

20 Mark out on the rear of the hoist pivot mount the centre line of the hoist, 1343mm from vehicle centre line (see Fig 4). Position the block pivot (Table 1 Item 6) such that the centre line of the hoist runs through the centre of the block pivot, the round end of the block should face upwards. The centre line of the top pivot hole of the swivel assembly (Table 1 Item 7) should be in line with the top of the hoist pivot mount (see Fig 4 view on arrow 'C'). Weld the block pivot to the hoist pivot mount and restore the paint finish to AESP 0200-A-201-013 and 0200-A-221-013 respectively.

21 Assemble the swivel assembly (Table 1 Item 7) to the block pivot (Table 1 Item 6) using the swivel pin assembly (Table 1 Item 8). Remove one circlip and washer from the pin, line up the swivel assembly with the block pivot and insert swivel pin. Refit the washer and circlip to the swivel pin.

22 Fasten the hoist support mounting bracket (Table 1 Item 5) to the vehicle with 2 off bolts, plain and spring washers (items 9 to 11).

23 Position the bracket support (Table 1 Item 12) on the front face of the hoist support mounting bracket (item 5). Adjust its position so that the bottom of the bracket support is level with the bottom of the hoist support mounting (see Fig 4 view on arrow 'A'). Ensure the centre line of the bracket is on the centre line of the hoist pivot swivel assembly. Weld the bracket support to the hoist support mounting and restore the paint finish to AESP 0200-A-201-013 and 0200-A-221-013 respectively.

24 Reweld the centre left hand concealment bracket (Table 2, item 1) forward of the bracket support mount (Table 1, item 12). Using the procedures detailed in AESP 0200-A-221-013 restore the vehicle paint finish in the area detailed.

25 Fit the strap assembly (Table 1 Item 14) to the bracket support assembly (Table 1 Item 12) using items 16, 17 & 18 of Table 1.

Generator mounting (Qty 2 for ASP variants only)

WARNING

PERSONNEL INJURY. SERIOUS INJURY CAN OCCUR FROM METAL DEBRIS AND WELD ARCING DURING THE PROCEDURES DETAILED IN THIS SEQUENCE OF OPERATIONS. APPROPRIATE CLOTHING AND EYE PROJECTION SHOULD BE WORN THROUGHOUT.

26 Weld the pads (Fig 1) (Table 1, items 20 & 21) in position using the procedures detailed in AESP 0200-A-201-013. Restore the vehicle paint finish in accordance with AESP 0200-A-221-013.

27 Mount the generator stowage frame (Fig 3) (Table 1, item 22) to the hull with screws, plain and spring washers (items 23 to 25). Using the procedures detailed in AESP 0200-A-221-013 restore the vehicle paint finish in the area detailed.

Telescopic Mast stowage (for ASP only)

WARNING

PERSONNEL INJURY. SERIOUS INJURY CAN OCCUR FROM METAL DEBRIS AND WELD ARCING DURING THE PROCEDURES DETAILED IN THIS SEQUENCE OF OPERATIONS. APPROPRIATE CLOTHING AND EYE PROJECTION SHOULD BE WORN THROUGHOUT.

28 Weld the pads (Fig 1) (Table 1, item 26 (4 off)) in position using the procedures detailed in AESP 0200-A-201-013.

29 Assemble the rear mounted telescopic mast stowage frames as detailed in Fig 2. Secure the mast mounting brackets (Table 1, item 31 (4 off)) to the stowage frames (item 27) with the nuts, spring and flat washers (items 32 to 34 (4 off each)).

30 Assemble the right hand side mounted telescopic mast stowage frames as detailed in Fig 2. Secure the mast mounting brackets (Table 1, items 31 and 36 (2 off each)) to the stowage frames (item 35) with the nuts, spring and flat washers (Table 1, items 32, 33, 34, 37, 38 and 39 (4 off each)).

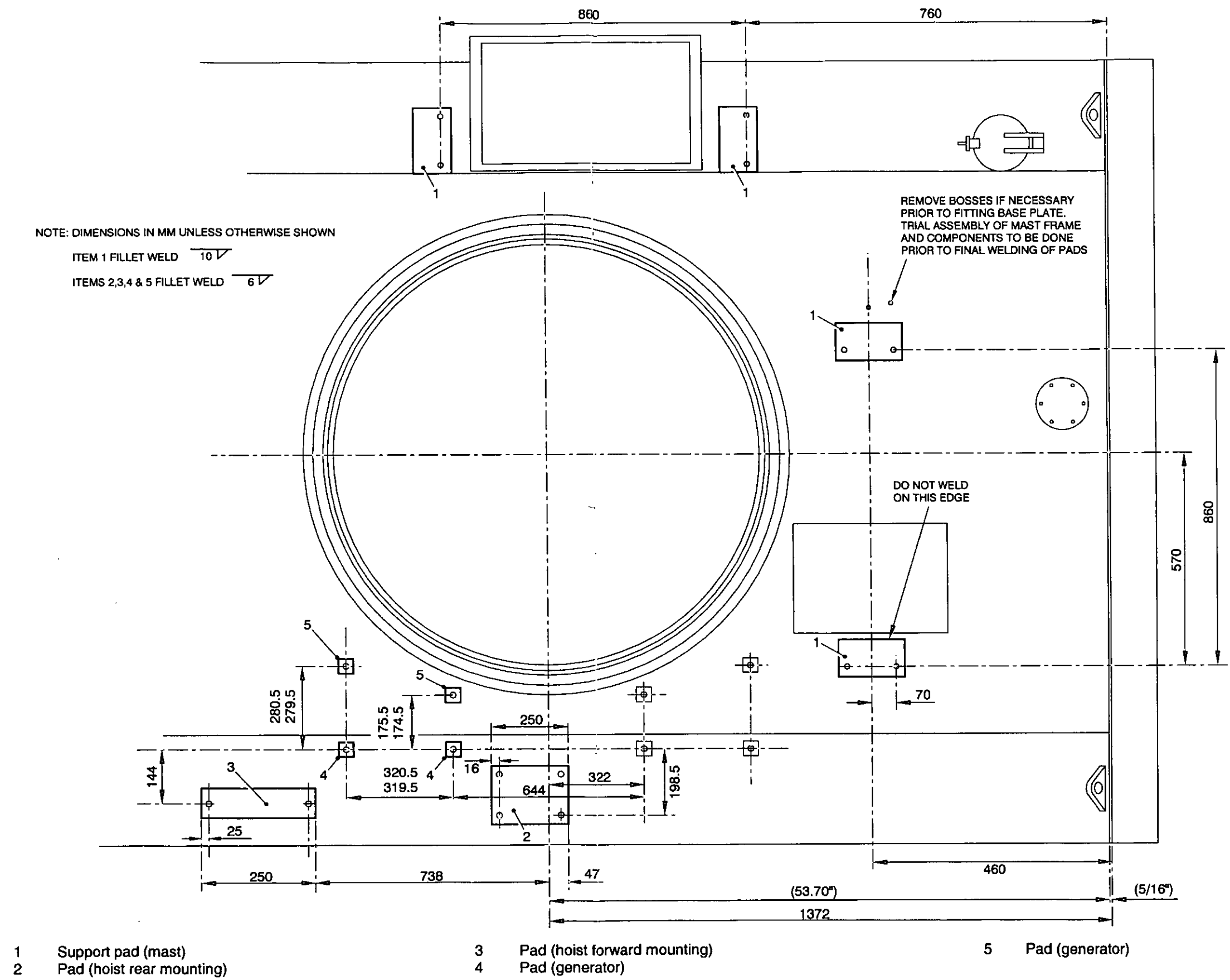
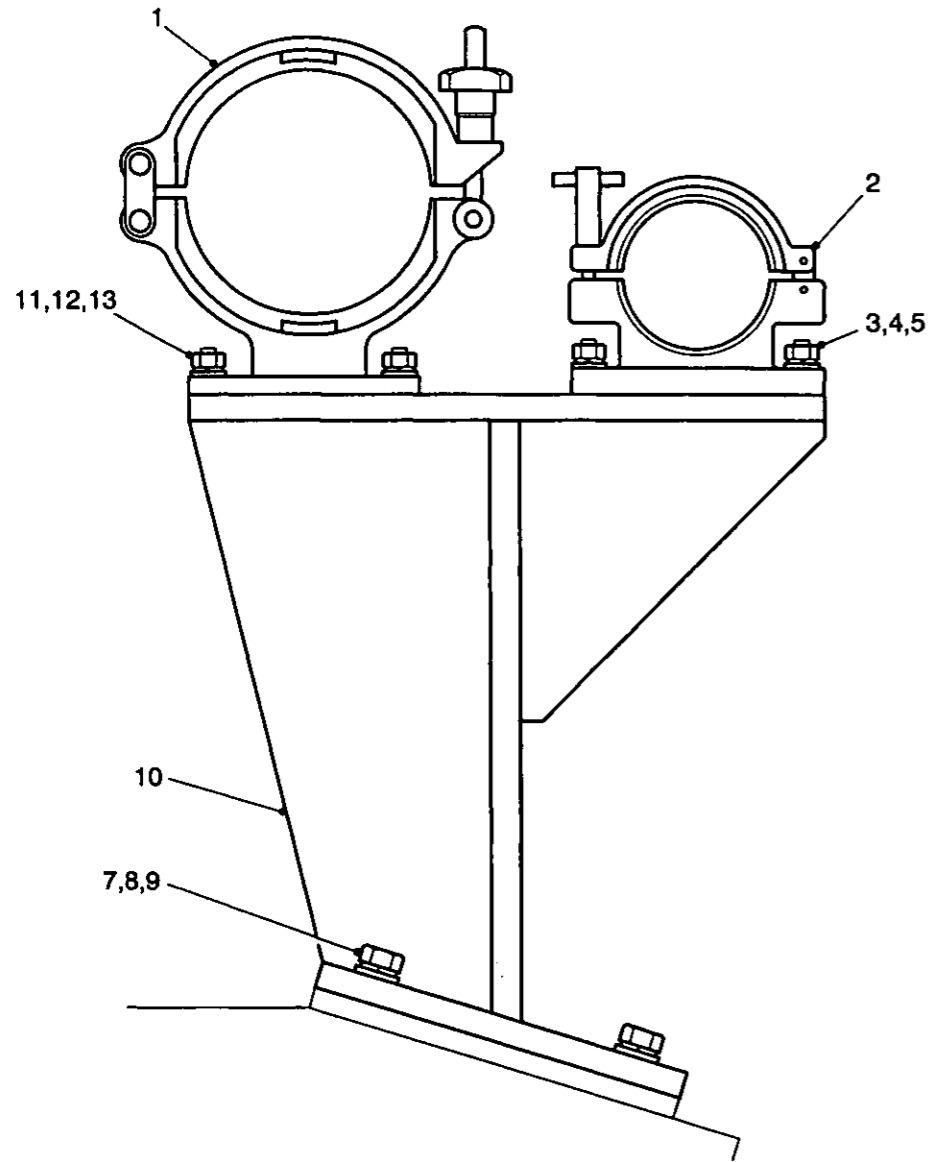
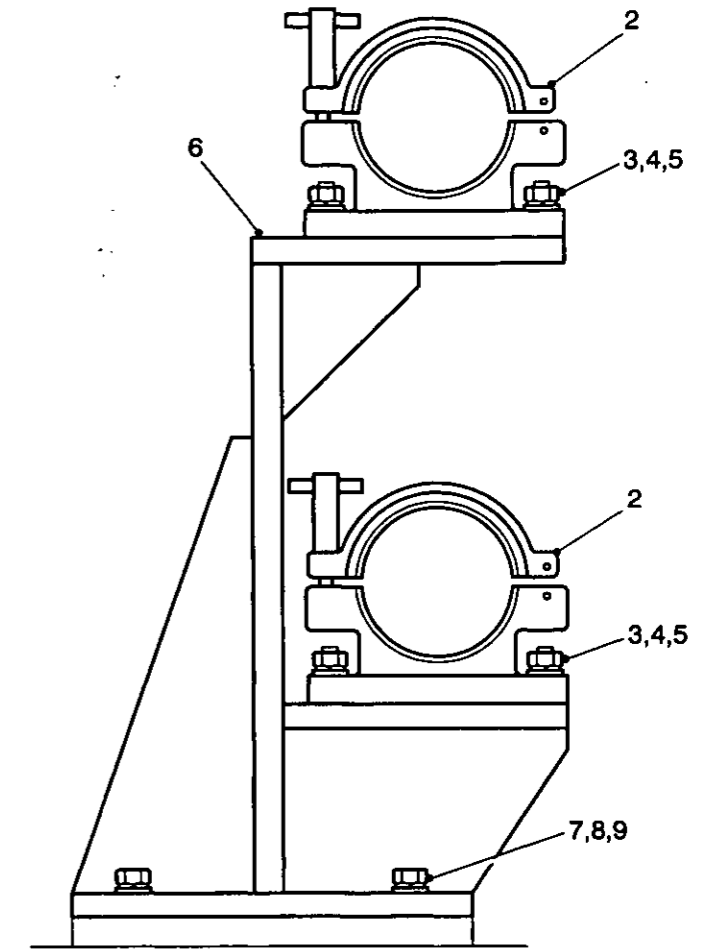
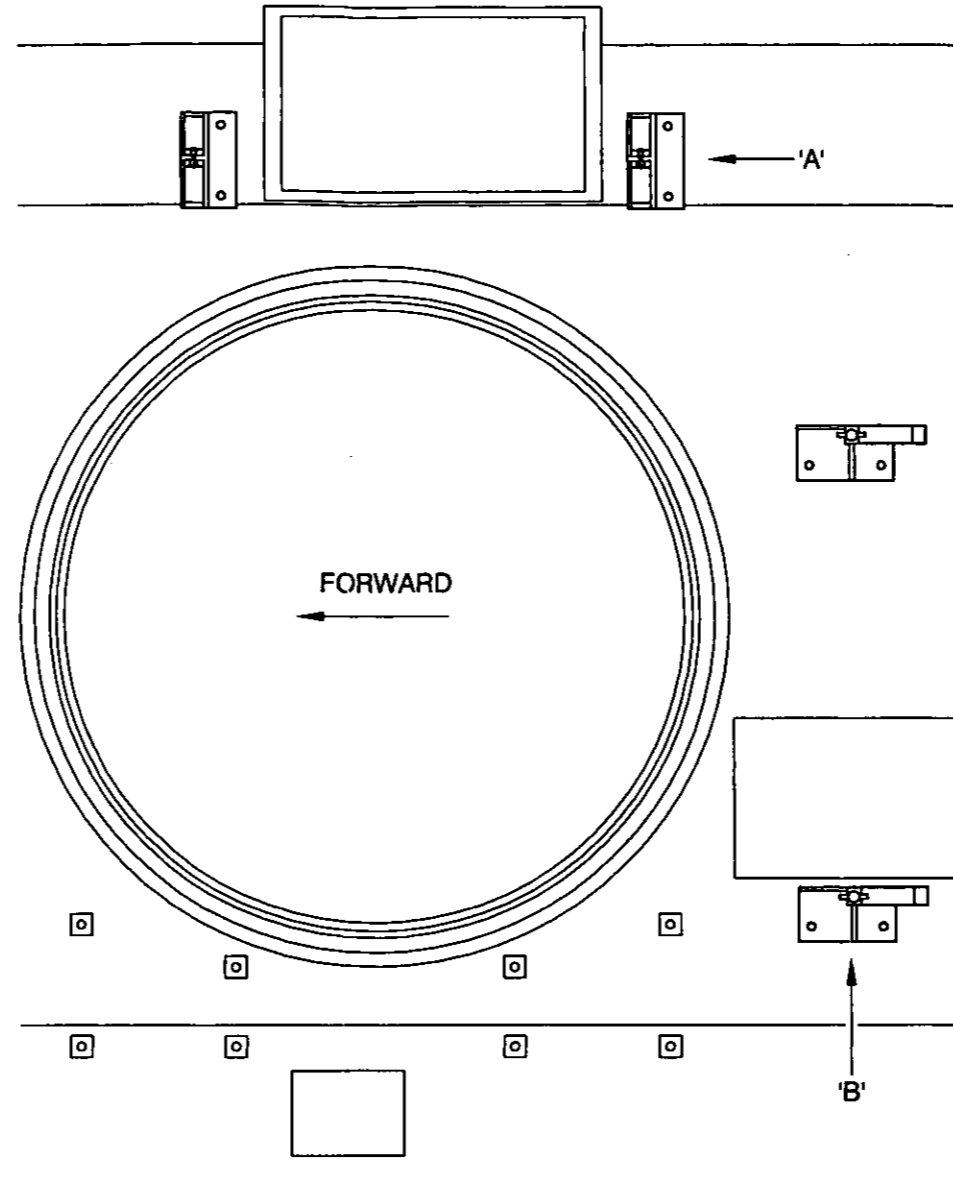


Fig 1 Hull mountings required to fit roof mounted generator, hoist assembly and masts.

432/538



VIEW ON ARROW 'A'



VIEW ON ARROW 'B'

- 1 Mast mounting bracket
- 2 Mast mounting bracket
- 3 Nut
- 4 Spring washer

- 5 Flat washer
- 6 Welded assy of telescopic mast stowage frame
- 7 Bolt
- 8 Spring washer

- 9 Washer flat
- 10 Welded assy of telescopic mast stowage frame right hand side
- 11 Nut
- 12 Spring washer
- 13 Washer flat

Fig 2 Assembly of telescopic mast stowage frames.

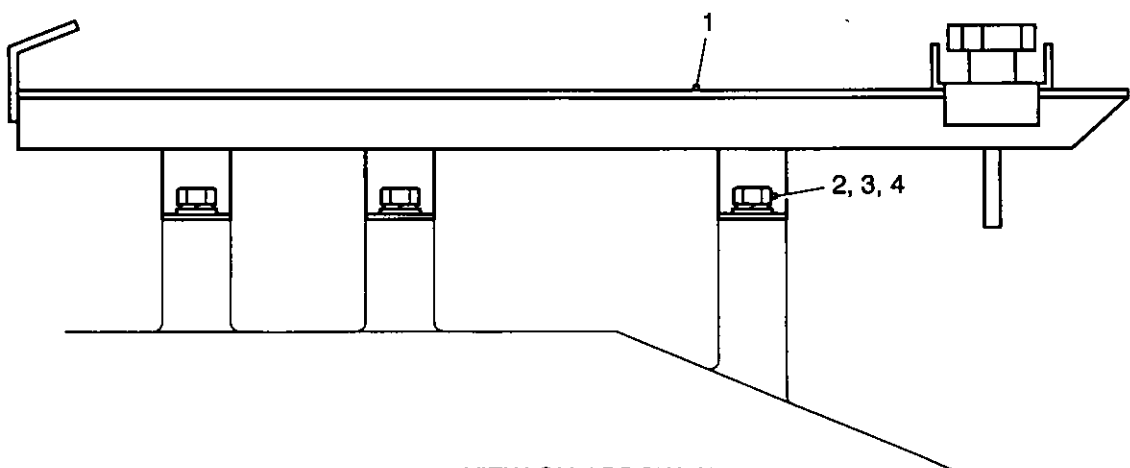
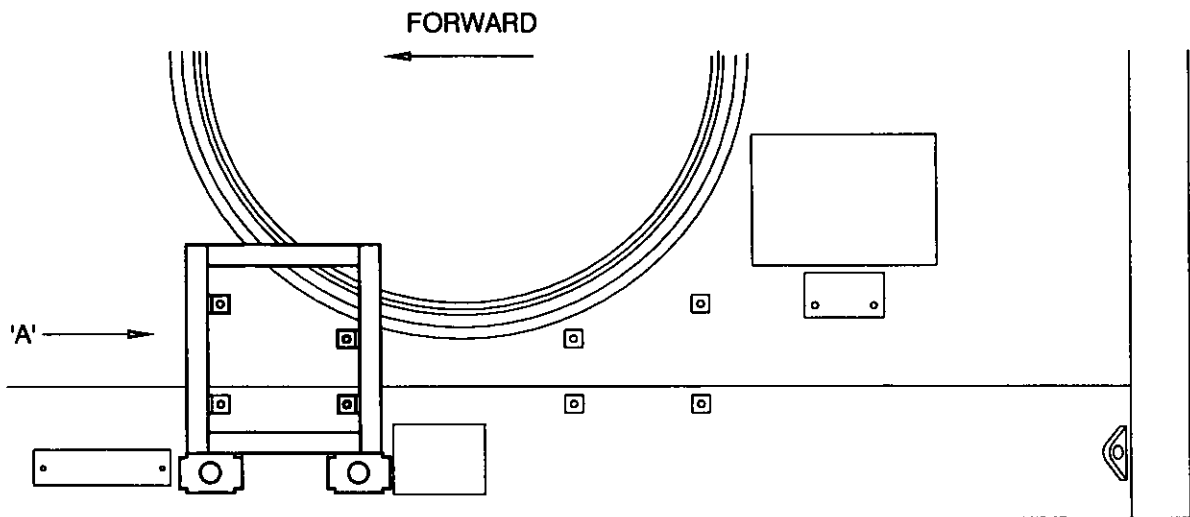
432/540

31 Mount the four assemblies to the hull roof (see Fig 2) with the bolts, spring and flat washers (Table 1, items 28, 29 and 30).

Removal of hoist, mast and generator brackets

32 Removal of the hoist, mast and generator mounting brackets is the reverse of the procedure detailed for fitting, ensuring the following:

30.1 The exposed threads in the welded pads are to be plugged with a suitable blanking plug to prevent corrosion.



VIEW ON ARROW 'A'

- | | | | |
|---|--|---|---------------|
| 1 | Assembly of additional generator stowage | 3 | Spring washer |
| 2 | Screw | 4 | Flat washer |

432/539

Fig 3 Assembly of additional generator frame required to fit roof mounted generator.

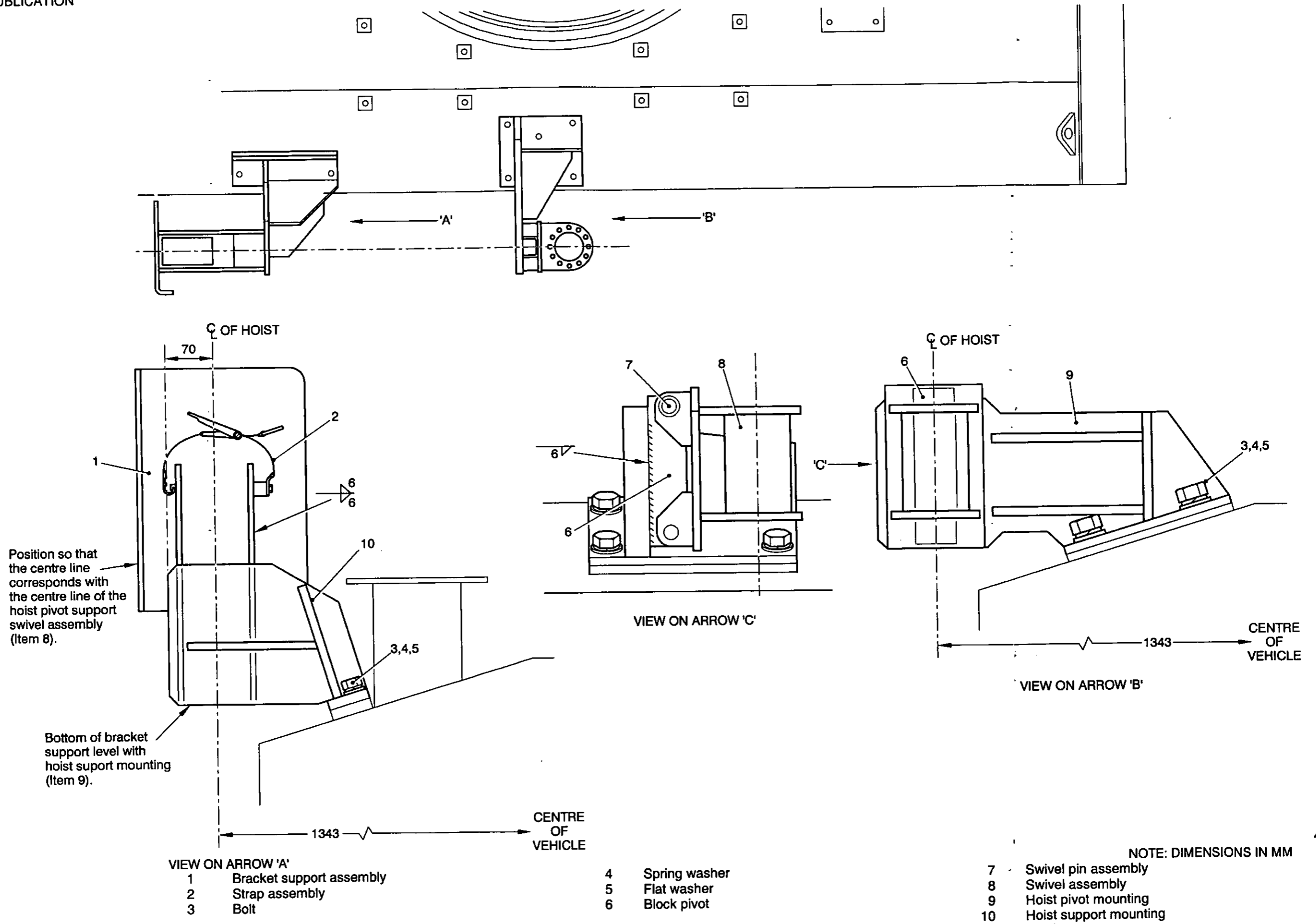


Fig 4 Mounting brackets required to fit hoist assembly.

UNRECORDED

UNRECORDED

COMMENT(S) ON AESP*

To: DCCS
BFPO 794

From:
.....
.....
.....

Sender's Reference	BIN Number	Date
AESP* Title:		
Chapter(s)/Instruction	Page(s)/Paragraph(s)	
If you require more space please use the reverse of this form or a separate piece of paper. Comment(s): 		

Signed: Telephone No.:
 Name (Capitals): Rank/Grade: Date:
 ✕

FOR AESP* SPONSOR USE ONLY

To: From:

Thank you for commenting on AESP*:

Your reference: Dated:

Action is being taken to:	Tick	Tick
Issue a revised/amended AESP*		Under investigation
Incorporate comment(s) in future amendments		No action required
Remarks 		

Signed: Telephone No.:
 Name (Capitals): Rank/Grade: Date:
 *AESP or EMER

